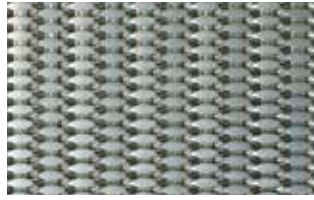


# GAGEWOVEN®



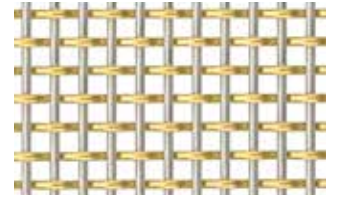
GW900 Escalator (SS)



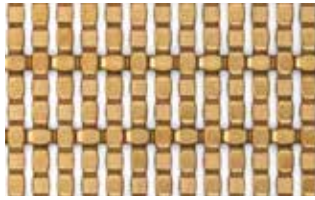
GW902 Snakeskin (SS)



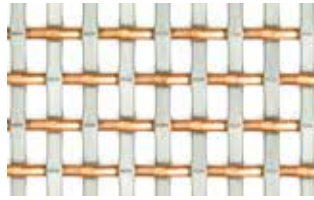
GW903 Baroda (SS)



GW906 Round Symmetry (B/SS)



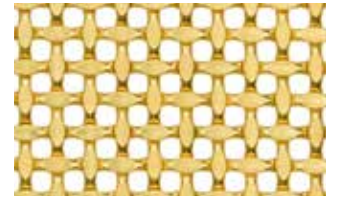
GW908 Jewel Path (CB)



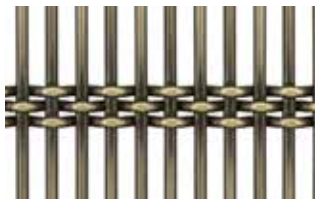
GW909 St. Paul (C/SS)



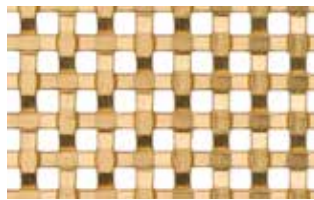
GW910 Ice Dancer (CA)



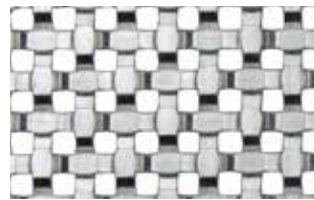
GW910A Ice Dancer II (B)



GW911 Venetian (BA)



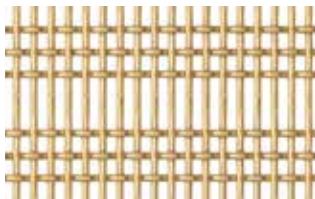
GW912 Blue Collar (CB)



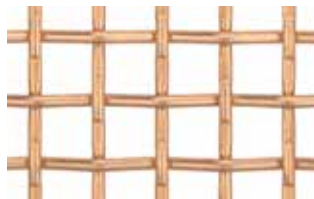
GW912A Blue Collar II (SS)



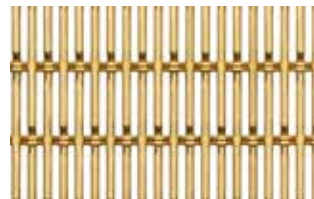
GW913 Highrise (SS)



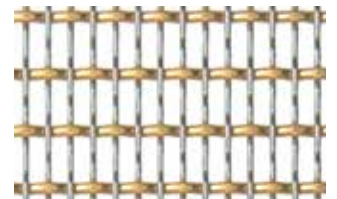
GW914 Corsican (B)



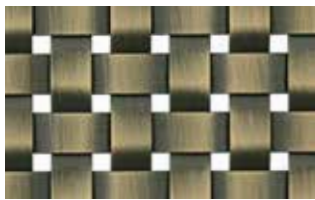
GW915 Intersection (C)



GW916 Linear Cross (CB)



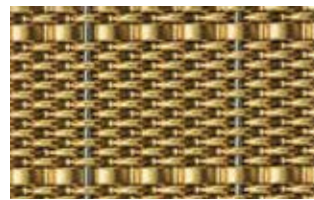
GW918 Madison (CB/SS)



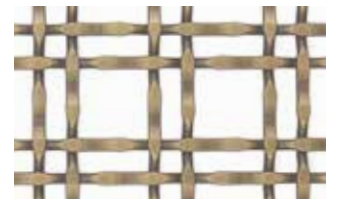
GW921 Chess (BA)



GW925 Infinity II (CA)



GW927 Akiko II (B/SS)



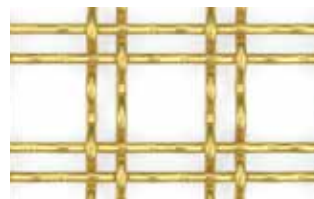
GW928 Rivoli (BA)



GW929 Gridlock (SS)



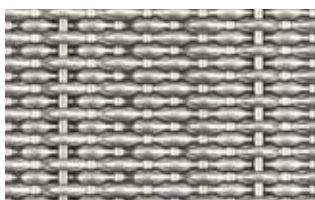
GW930 Basketweave (BA)



GW931 Waverly (B)



GW932 Charmant (SS)



GW933 Linen (SS)

*Designs shown are not to scale. Digital print processes cannot exactly replicate the color and finish nuances of our metal products. Please request a physical sample for an accurate color match.*

Design #	Name	Mesh Category	"W" Dimension Alloy	"H" Dimension Alloy	Mixed Metals	Antique Finish	Powder Coat
GW900	Escalator	Opaque	SS	SS	No		
GW902	Snakeskin	Opaque	SS	SS	No		
GW903	Baroda	Opaque	SS	SS	No		
GW906	Round Symmetry	Fine	SS, CB, C, B	SS, CB, C, B	Yes**	A	PC
GW908	Jewel Path	Medium	SS, CB, B	SS, CB, B	No	A	PC
GW909	St. Paul	Fine	SS, CB, C, B	SS	Yes*	A	PC
GW910	Ice Dancer	Medium	SS	SS	No	A	PC
GW910A	Ice Dancer II	Medium	SS, CB, B	SS, CB, B	No	A	PC
GW911	Venetian	Medium	SS, CB, B	SS	Yes*	A	PC
GW912	Blue Collar	Fine	CB, C, B	CB, C, B	No		
GW912A	Blue Collar II	Fine	SS	SS	No	A	PC
GW913	Highrise	Medium	SS, CB, B	SS, CB, B	No	A	PC
GW914	Corsican	Fine	SS, CB, B	SS, CB, B	Yes**	A	PC
GW915	Intersection	Medium	SS, CB, C, B	SS, CB, C, B	Yes**	A	PC
GW916	Linear Cross	Fine	SS, CB, B	SS, CB, B	No	A	PC
GW918	Madison	Fine	CB, C, B	SS	Yes*		PC
GW921	Chess	Medium	SS, B	SS, B	No	A	PC
GW925	Infinity II	Medium	SS	SS	No	A	PC
GW927	Akiko II	Opaque	SS, CB, B	SS	Yes*		
GW928	Rivoli	Medium	SS, CB, B	SS, CB, B	No	A	PC
GW929	Gridlock	Fine	SS, CB, B	SS, CB, B	No	A	PC
GW930	Basketweave	Medium	SS, CB, B	SS, CB, B	No	A	PC
GW931	Waverly	Fine	SS, CB, B	SS, CB, B	No	A	PC
GW932	Charmant	Fine	SS, CB, C, B	SS, CB, C, B	Yes**	A	PC
GW933	Linen	Opaque	SS, CB, B	SS	Yes*		

## What facts do I need to know about GageWoven?

- Twenty-five (25) standard patterns.
- All designs are available in 304 or 316 stainless steel (SS).
- Select designs are available in copper (C), commercial bronze (CB), brass (B), or a combination thereof.
- Antique Brass (BA) and Antique Copper (CA) plated finishes are available on select designs.
- Sheets can be easily cleaned with a mild soap and water solution or non-abrasive cleaner followed by drying with a soft, lint-free cloth.
- Appropriate for elevator lobbies and cab interiors, feature walls, ceilings, plus other architectural fabrication and consumer products.
- Class A Fire Rated

## What installation options can be used?

- **CPS Trim** – Mesh panels secured to a backer panel using a concealed attachment method – pressure sensitive adhesive, wire, or other method.
- **System USS** – Framing system suitable for in-fill panels, wall panels and room dividers
- **U-Channel** – Economical perimeter edge can be used as a framing solution for a wide range of wire mesh patterns (not all of our standard mesh patterns are suitable for this system).

\* If mixed metal, one alloy must be Stainless Steel (SS)

\*\* If mixed metal using a CB, C or B alloy, "H" must be Stainless Steel

SS = Stainless Steel

B = Brass

CB = Commercial Bronze

C = Copper

A = Antique Brass (BA) or Antique Copper (CA) finishes on Mild Steel. Size limitations apply.

PC = Satin Black, or Oil Rubbed Bronze finishes on either SS or mild steel. Size limitations apply.

# GAGE

ARCHITECTURAL PRODUCTS®

800-786-4243

■ [gagecorp.net](http://gagecorp.net)