

GAGEWOMEN[®]

ARCHITECTURAL WIRE MESH





Atlantic Station ■ GW905 Watchband (SS/SS)
 Specifier: TVS Interiors

GageWoven is an innovative collection of architectural wire mesh appropriate for a variety of applications. The material is particularly suited for elevator lobbies and cab interiors, feature walls, ceilings, plus other architectural fabrication and consumer products.

GageWoven offers 32 standard designs. Reference numbers and names are shown next to the photos. GageWoven is made to order based upon the specific panel sizes and quantities required for each unique project. As with all Gage products, custom design and collaboration are encouraged subject to reasonable quantities and supportive budgets.

All GageWoven designs are available in 304 or 316 stainless steel (SS). Select designs are also available in copper (C), commercial bronze (CB), brass (B), or a combination thereof. Mixed metal designs are a particular specialty of GageWoven. Antique Brass (BA) and Antique Copper (CA) plated finishes are available on 14 designs.

GageWoven provides the advantage of pre-fabricated panels and installer friendly systems to equip the contractor and the end user with cost effective and flexible solutions. Refer to pages 17, 19-20 for current systems.

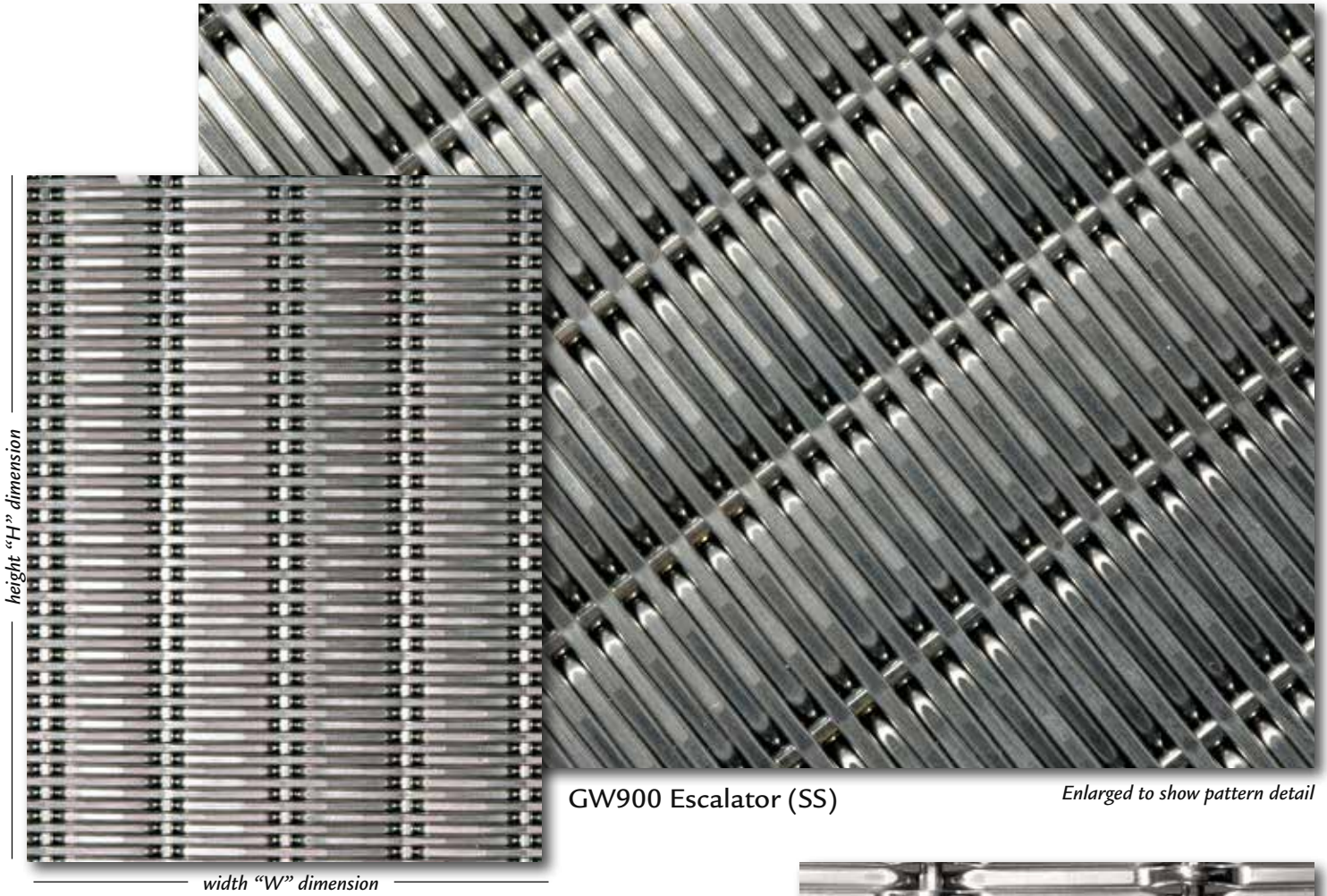
Gym Lockers ■ GW925 Infinity II (SS)
 Specifier: Design Lines



The smaller photo of each design is approximately to scale and demonstrates the correct orientation of the pattern according to width (“W” dimension) and height (“H” dimension). The larger photo of each design is magnified to show pattern detail.

800-786-4243 ■ www.gagecorp.net

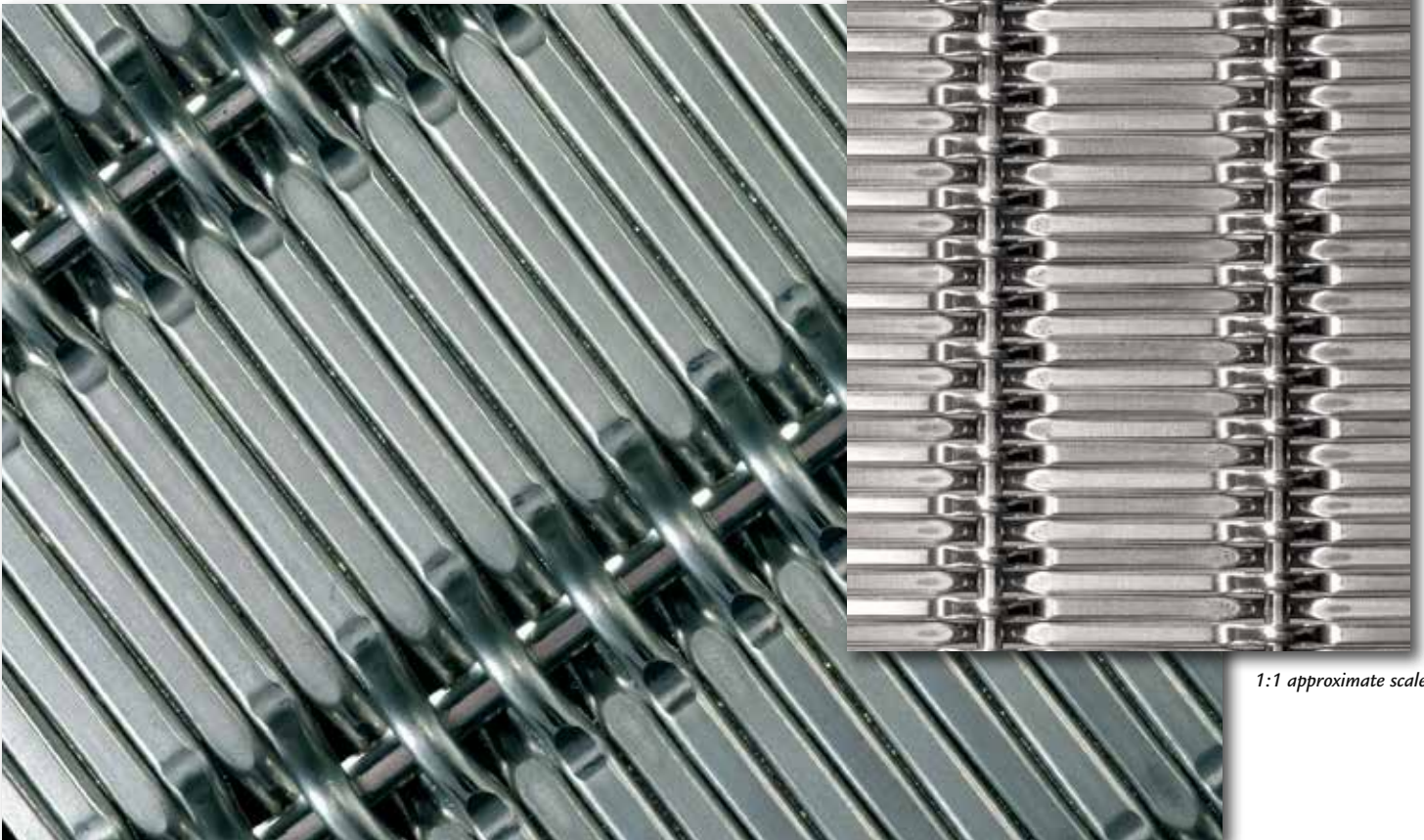
Cover: GW923 Cinema (SS)



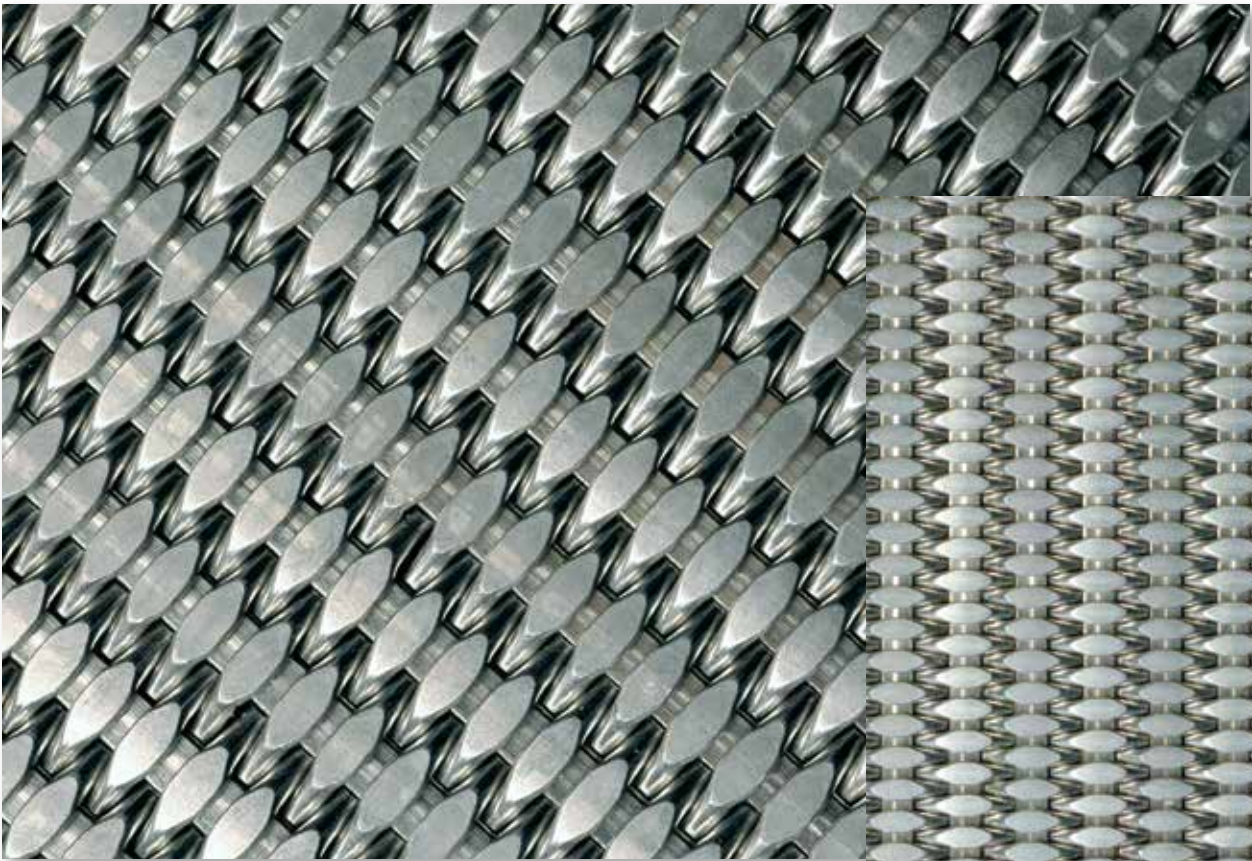
GW900 Escalator (SS)

Enlarged to show pattern detail

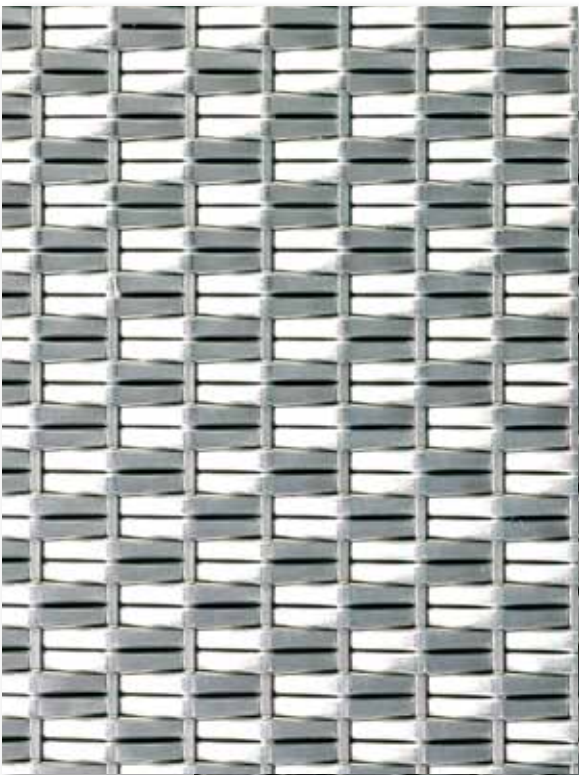
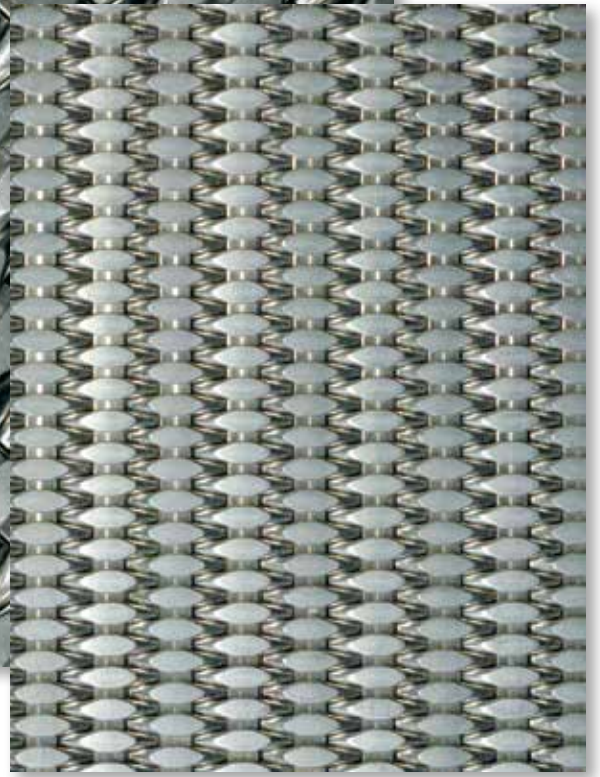
GW901 Guardian (SS)



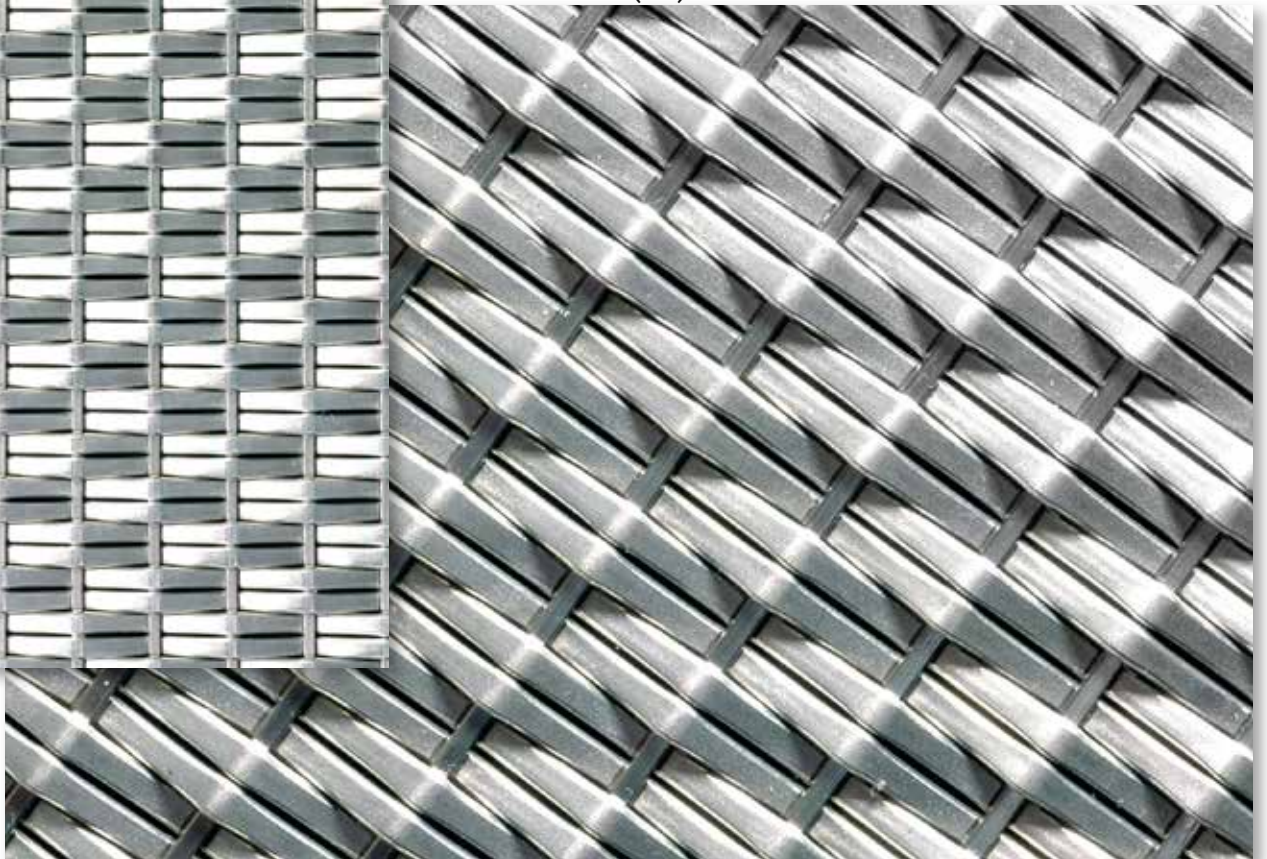
1:1 approximate scale



GW902 Snakeskin (SS)



GW903 Baroda (SS)

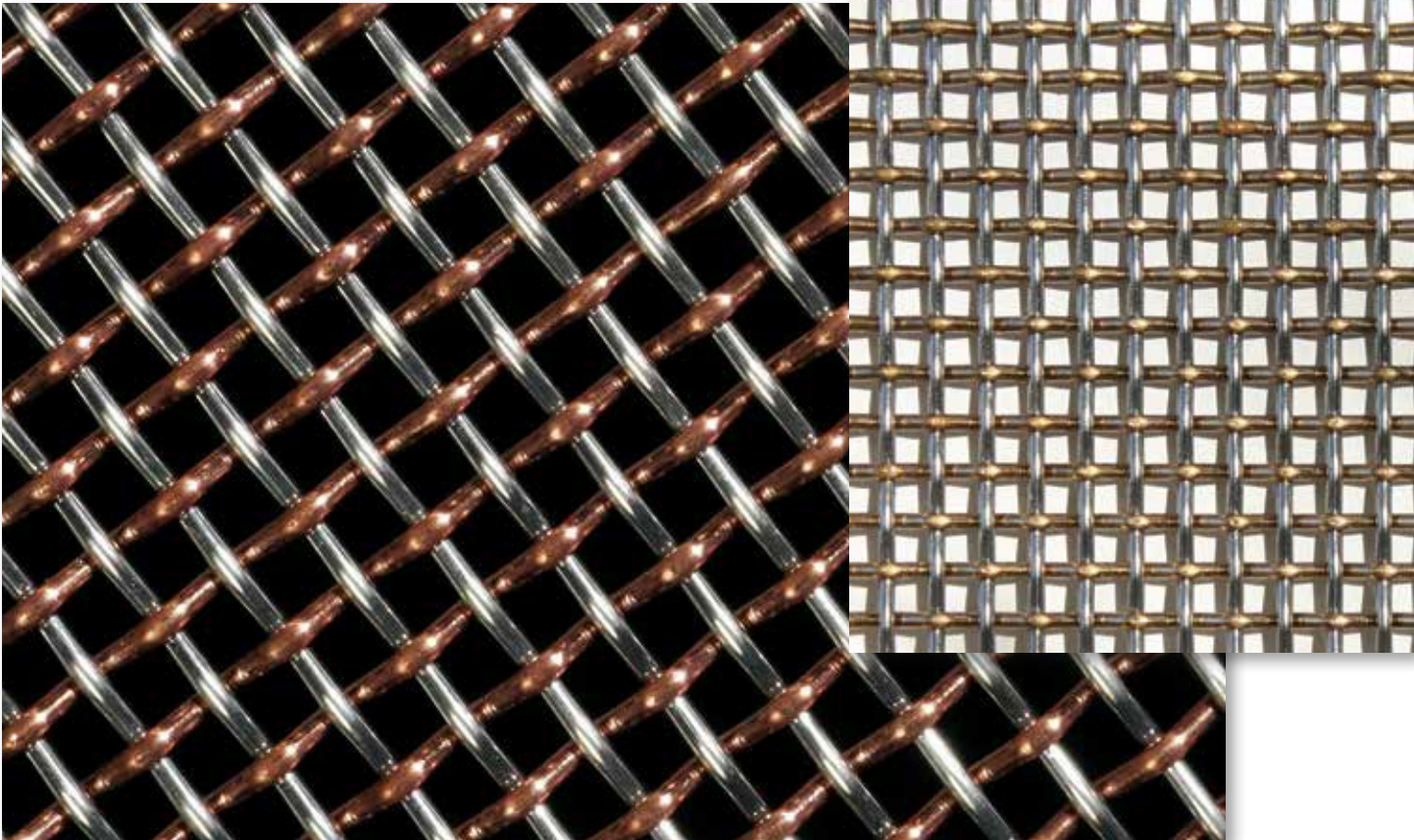


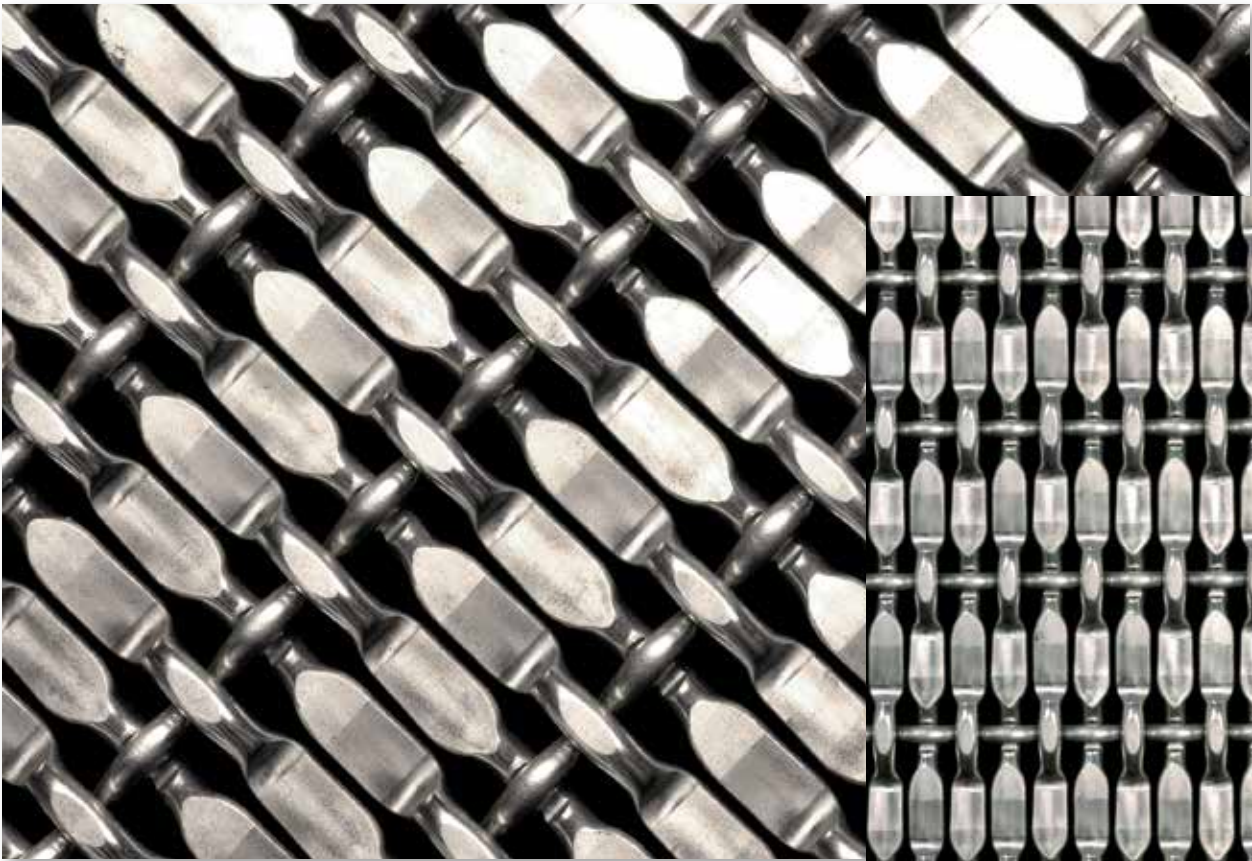


GW905 Watchband (SS)

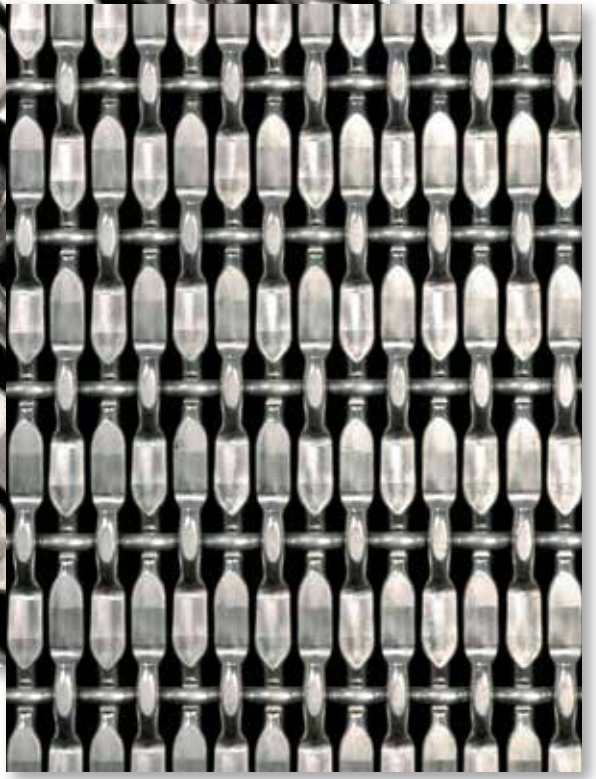
GW906 Round Symmetry (CB/SS)

GW906 Round Symmetry (C/SS)

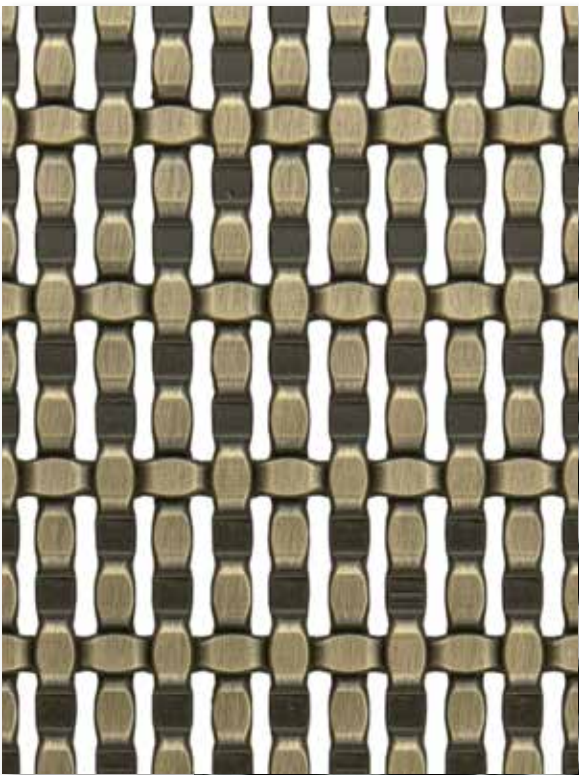




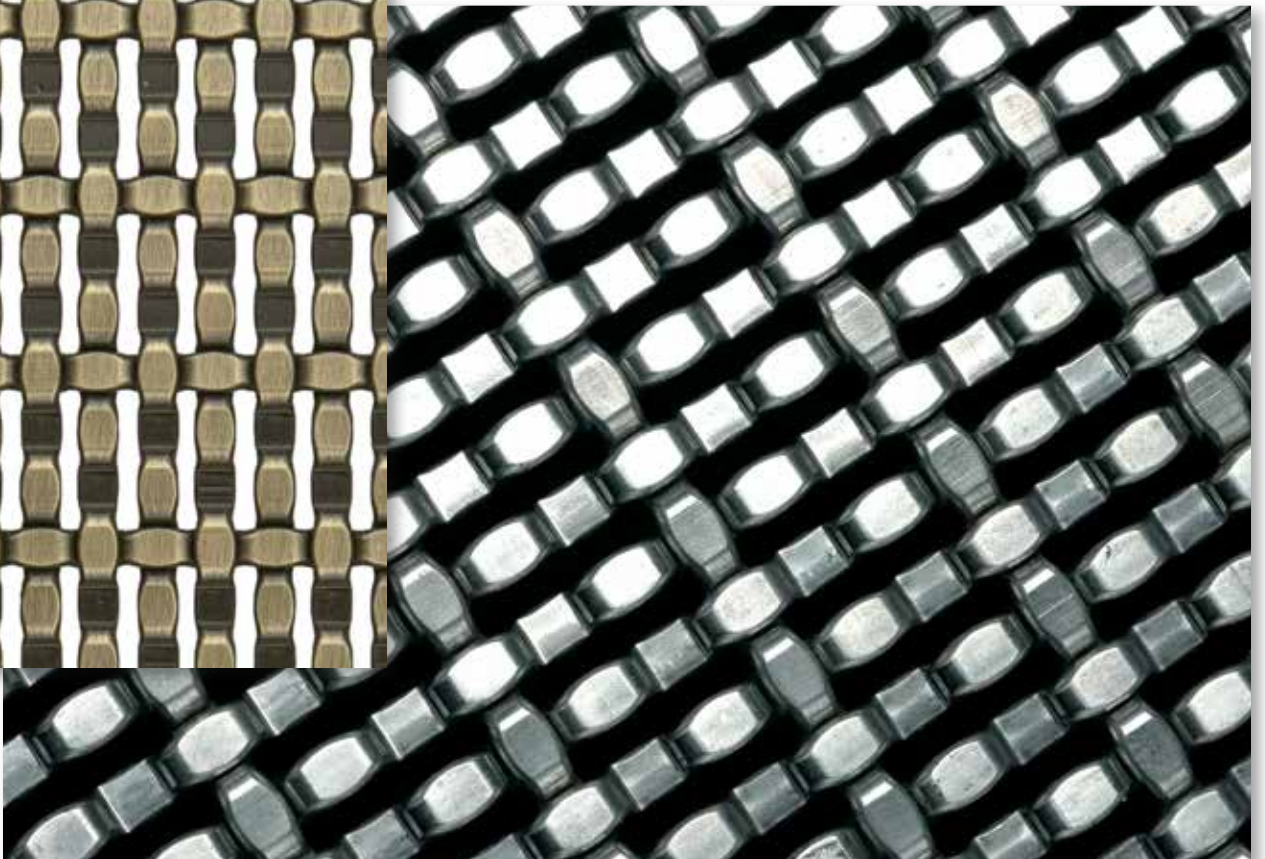
GW907 Metal Steps (SS)

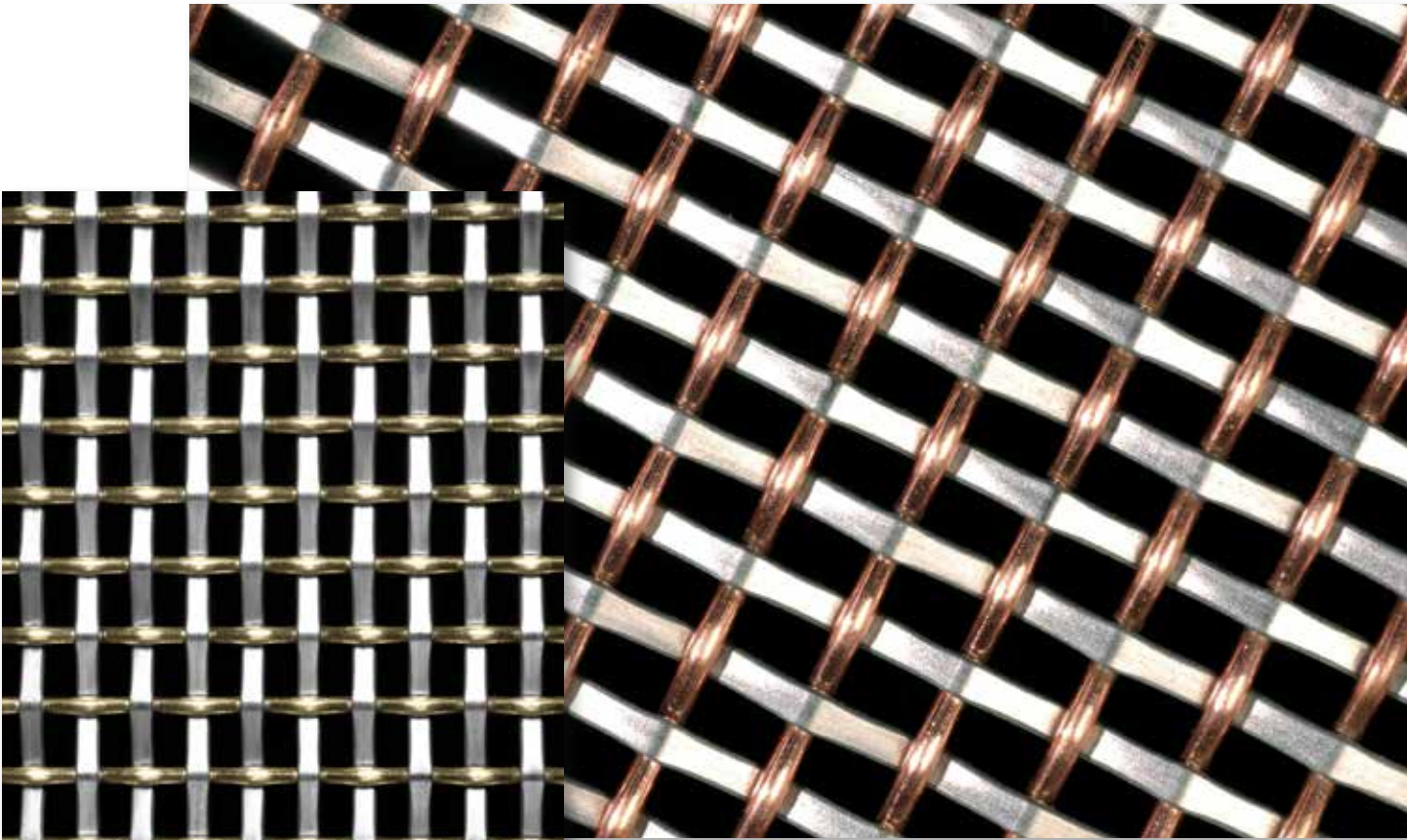


GW908 Jewel Path (BA)



GW908 Jewel Path (SS)



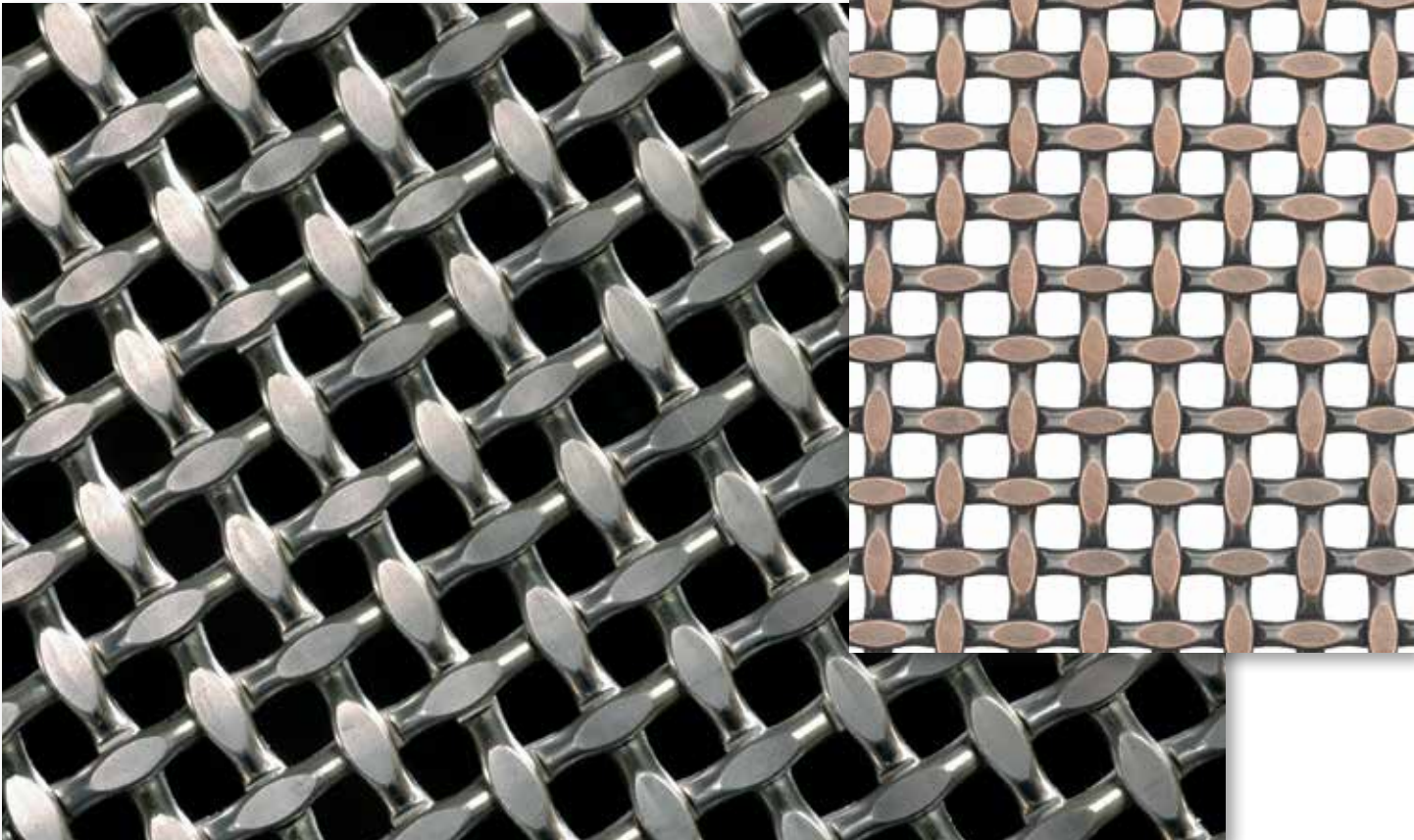


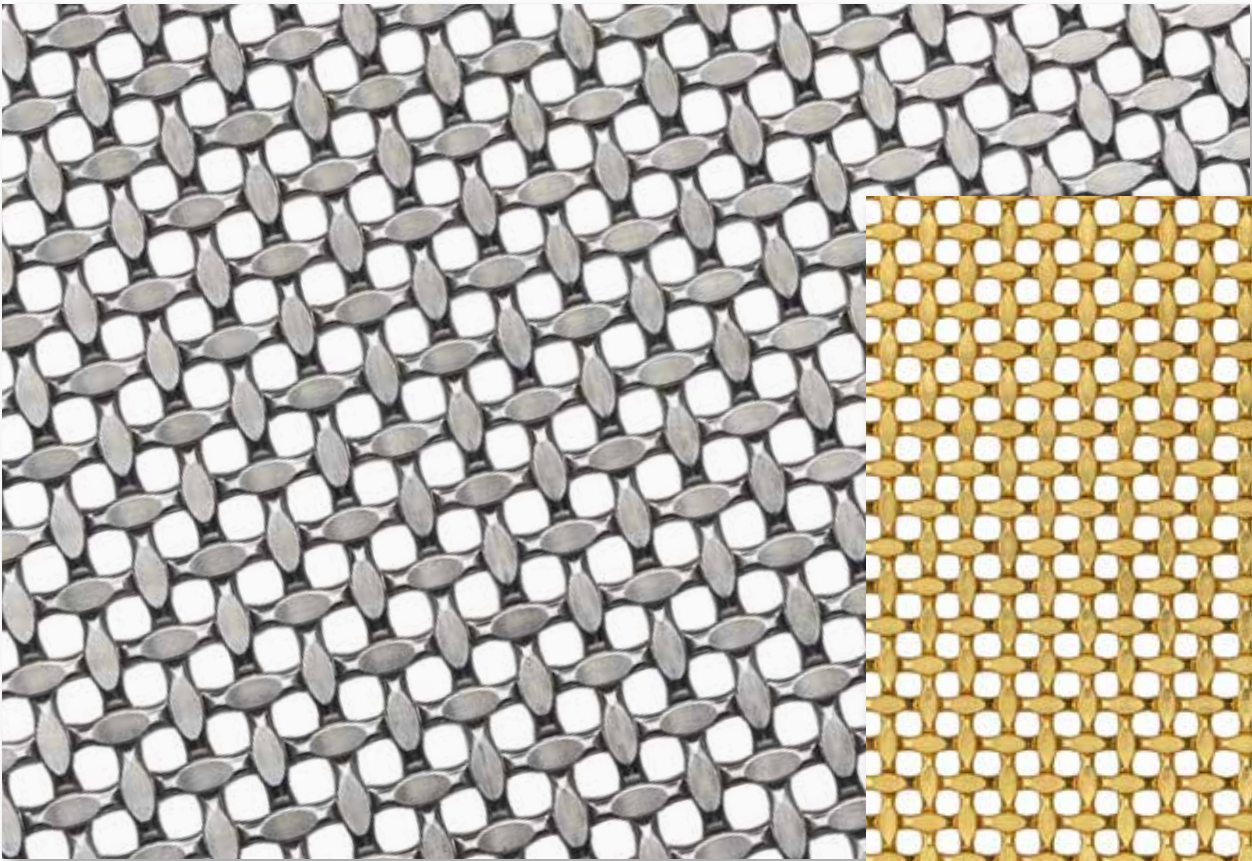
GW909 St. Paul (C/SS)

GW910 Ice Dancer (CA)

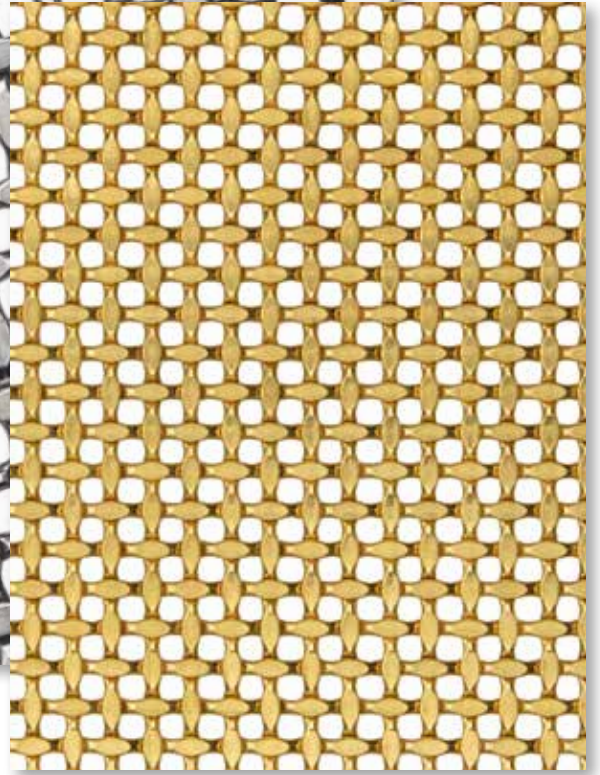
GW909 St. Paul (B/SS)

GW910 Ice Dancer (SS)



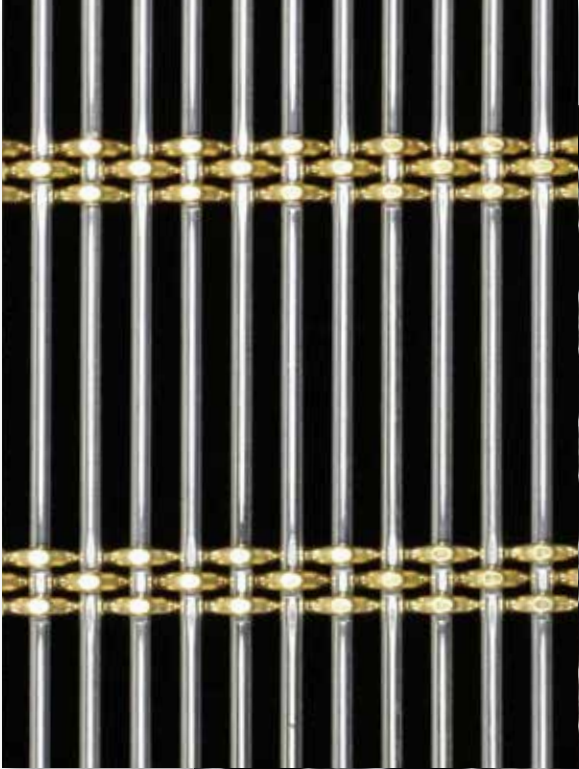


GW910A Ice Dancer II (SS)

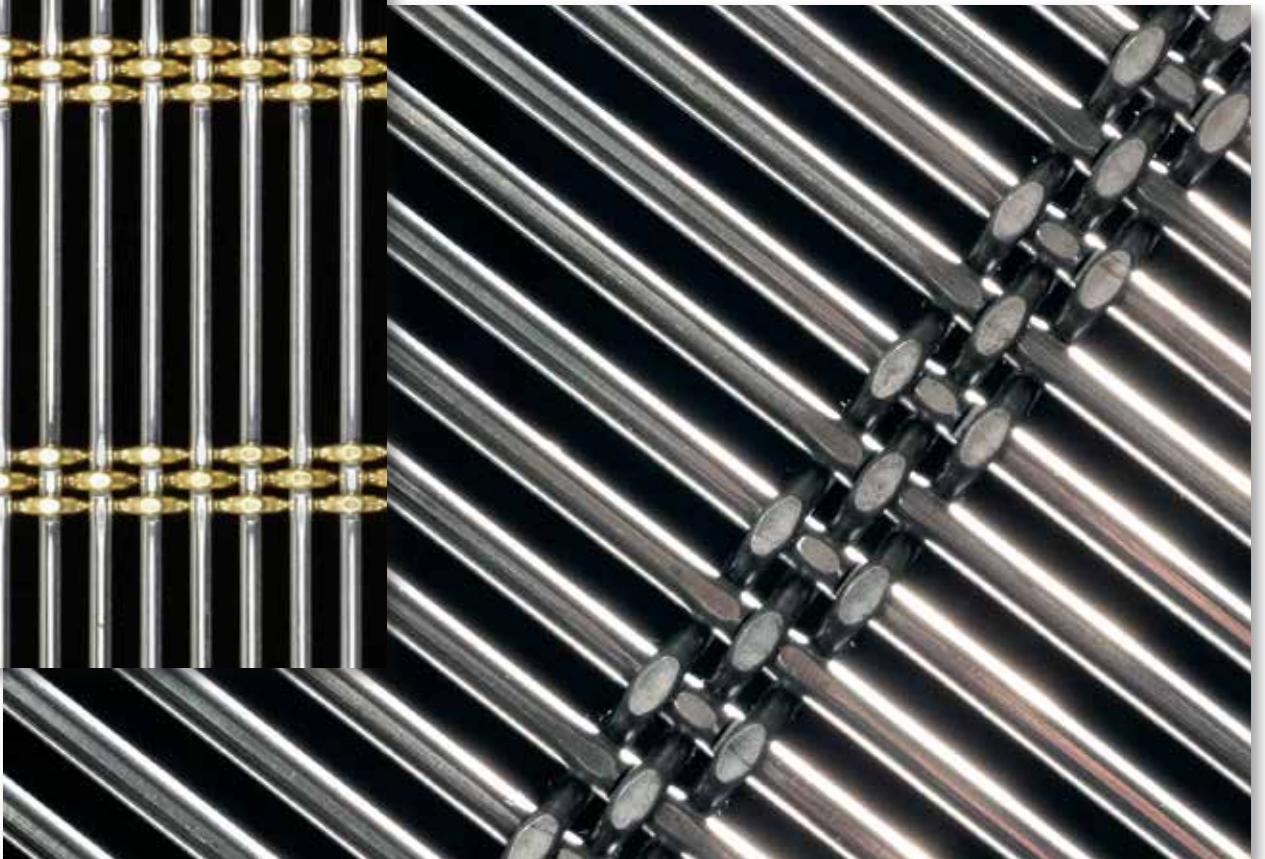


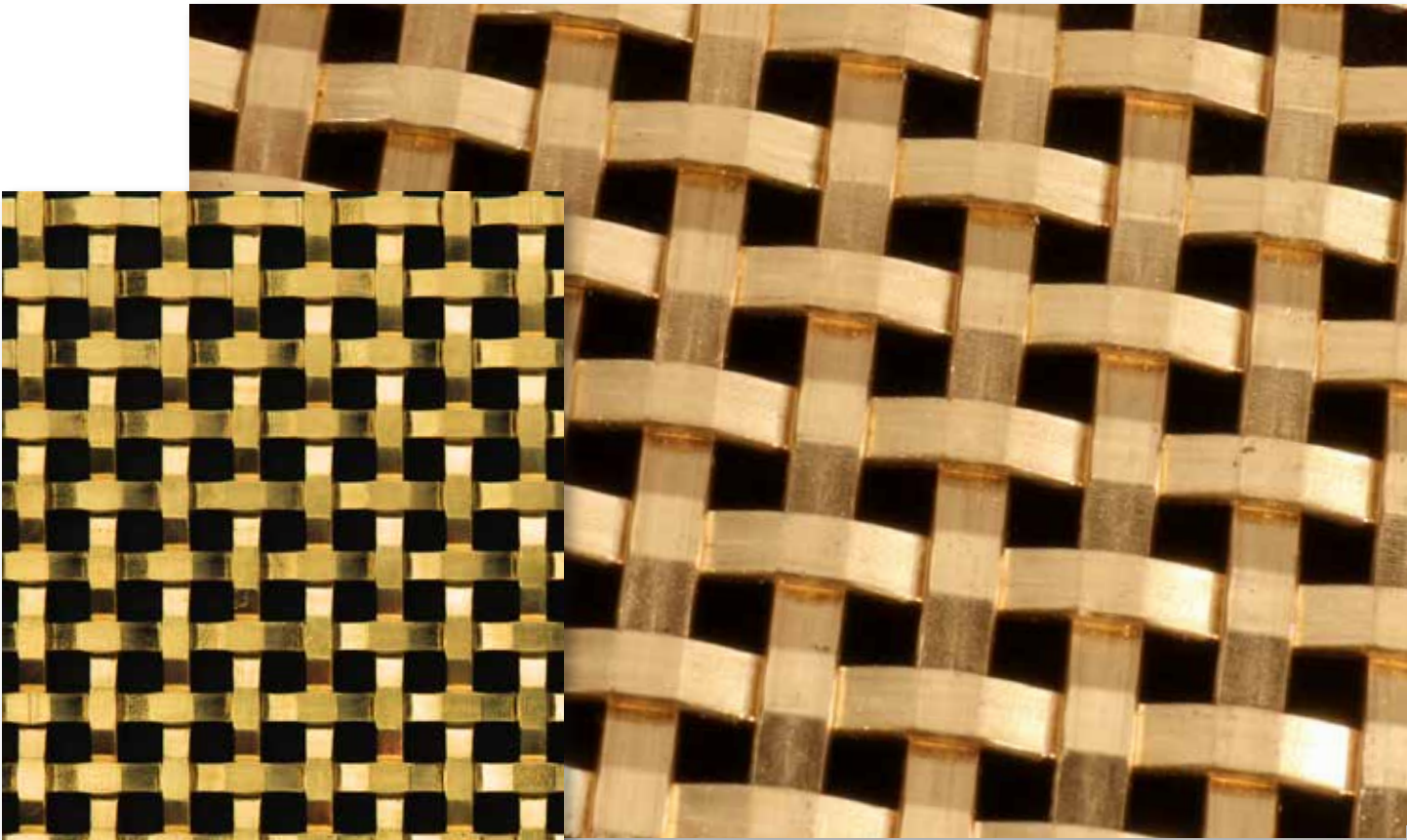
GW910A Ice Dancer II (B)

GW911 Venetian (B/SS)



GW911 Venetian (SS)



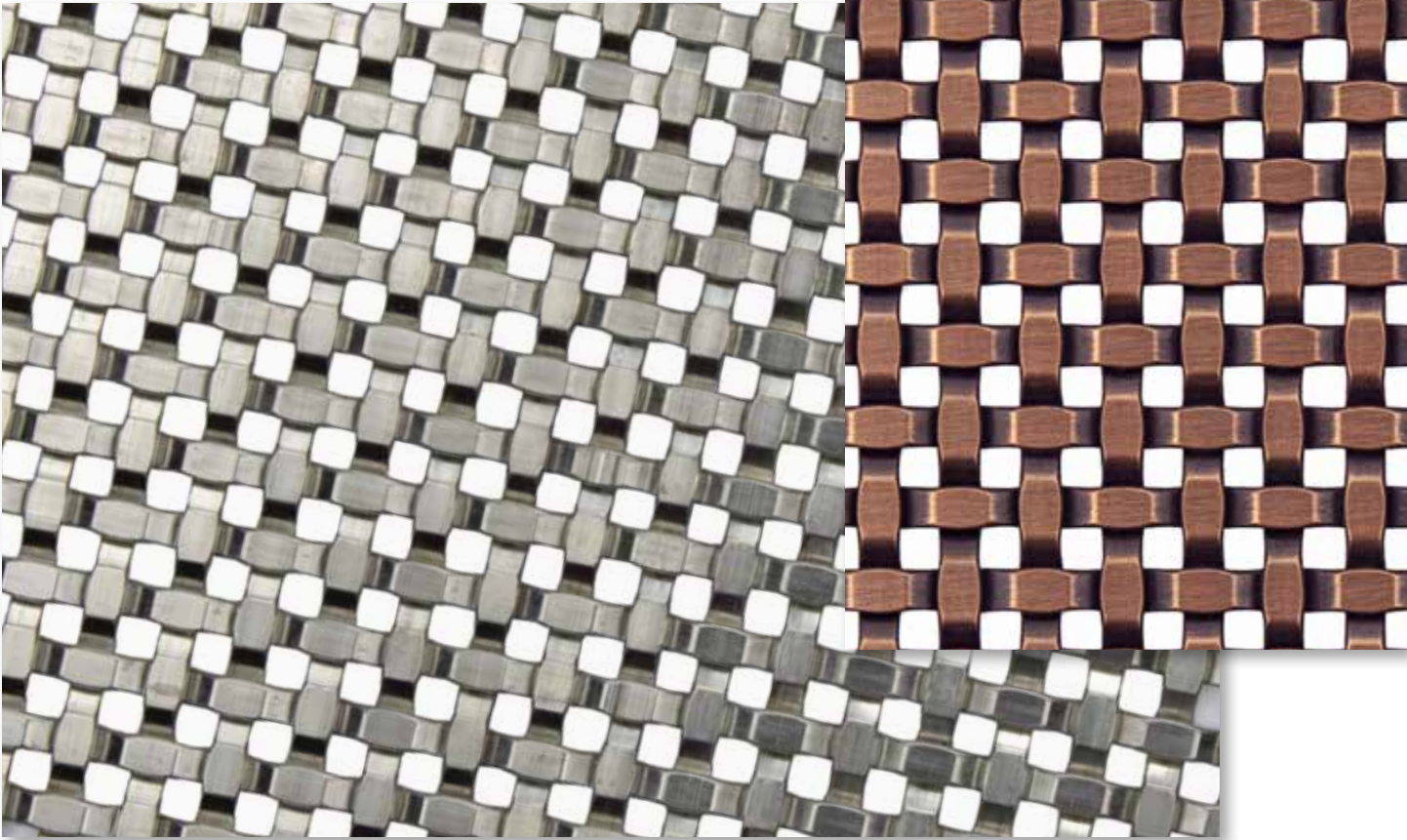


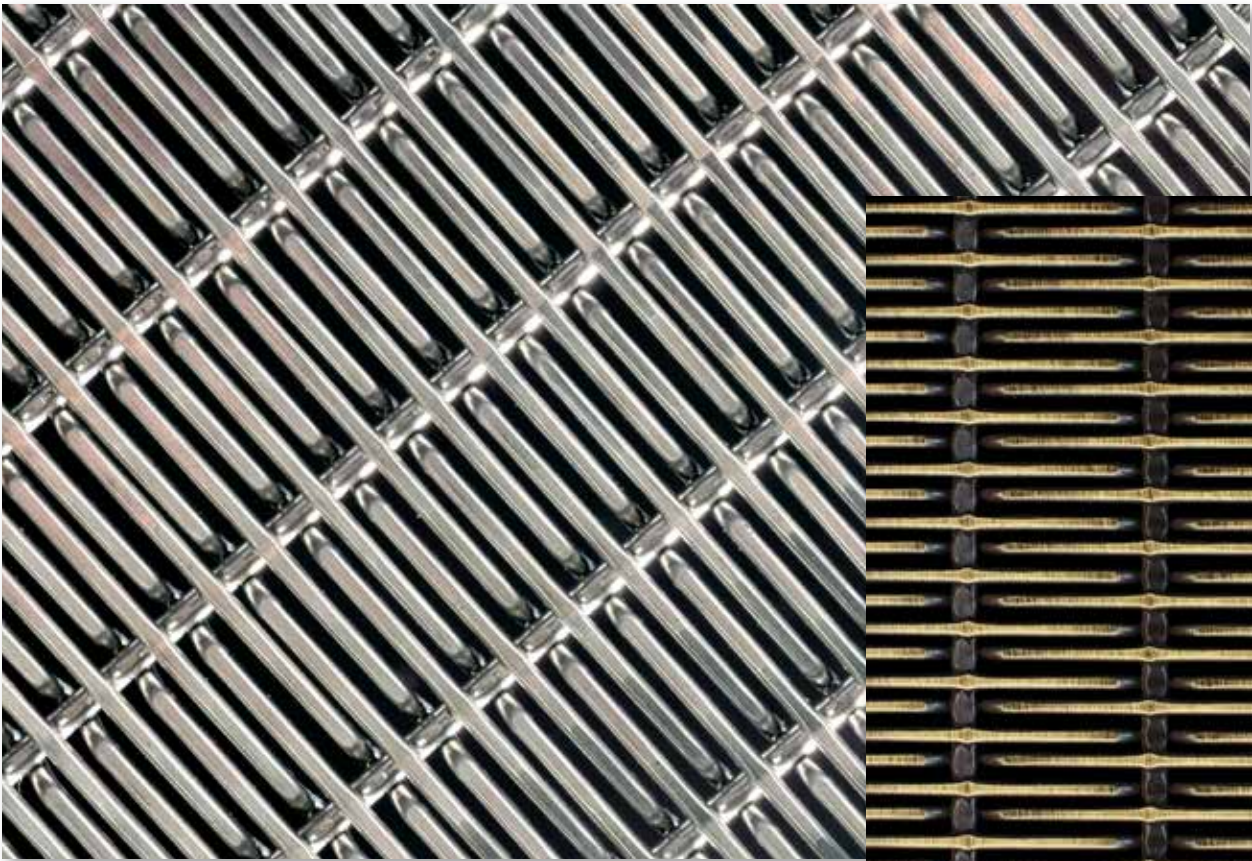
GW912 Blue Collar (B)

GW912 Blue Collar (CB)

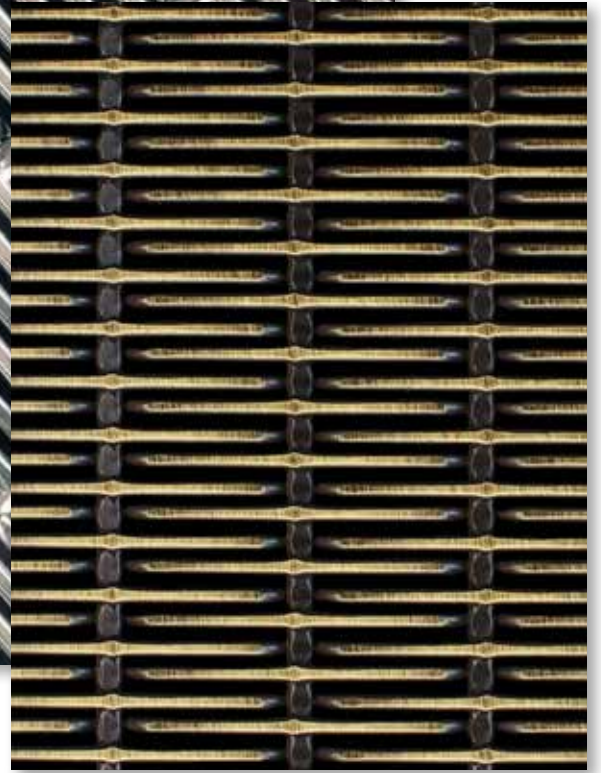
GW912A Blue Collar II (CA)

GW912A Blue Collar II (SS)

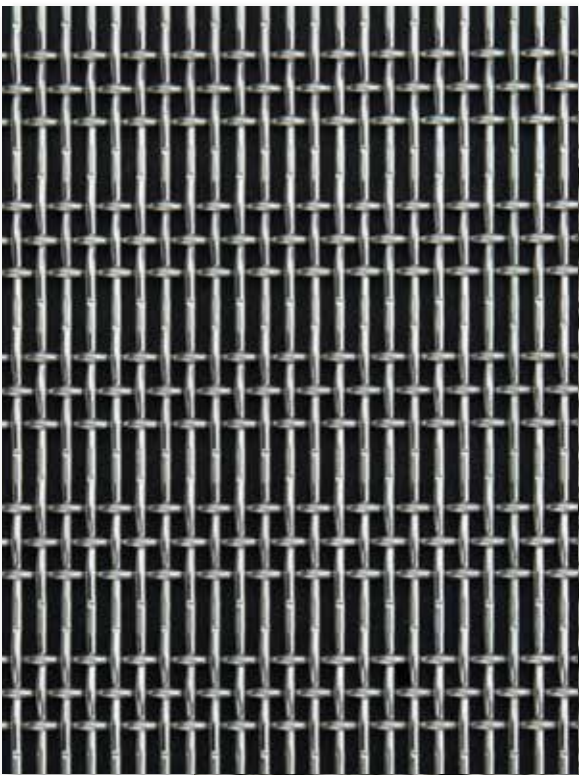




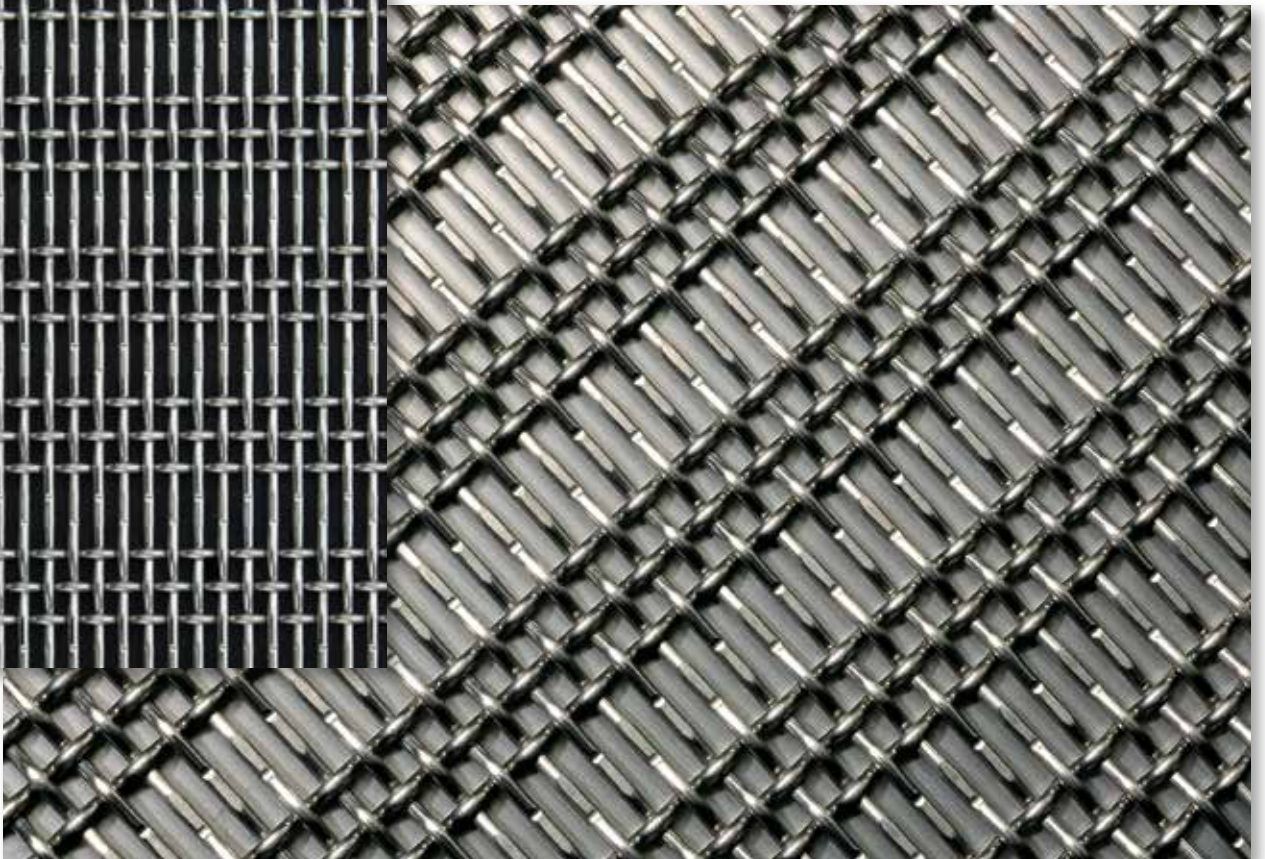
GW913 Highrise (SS)

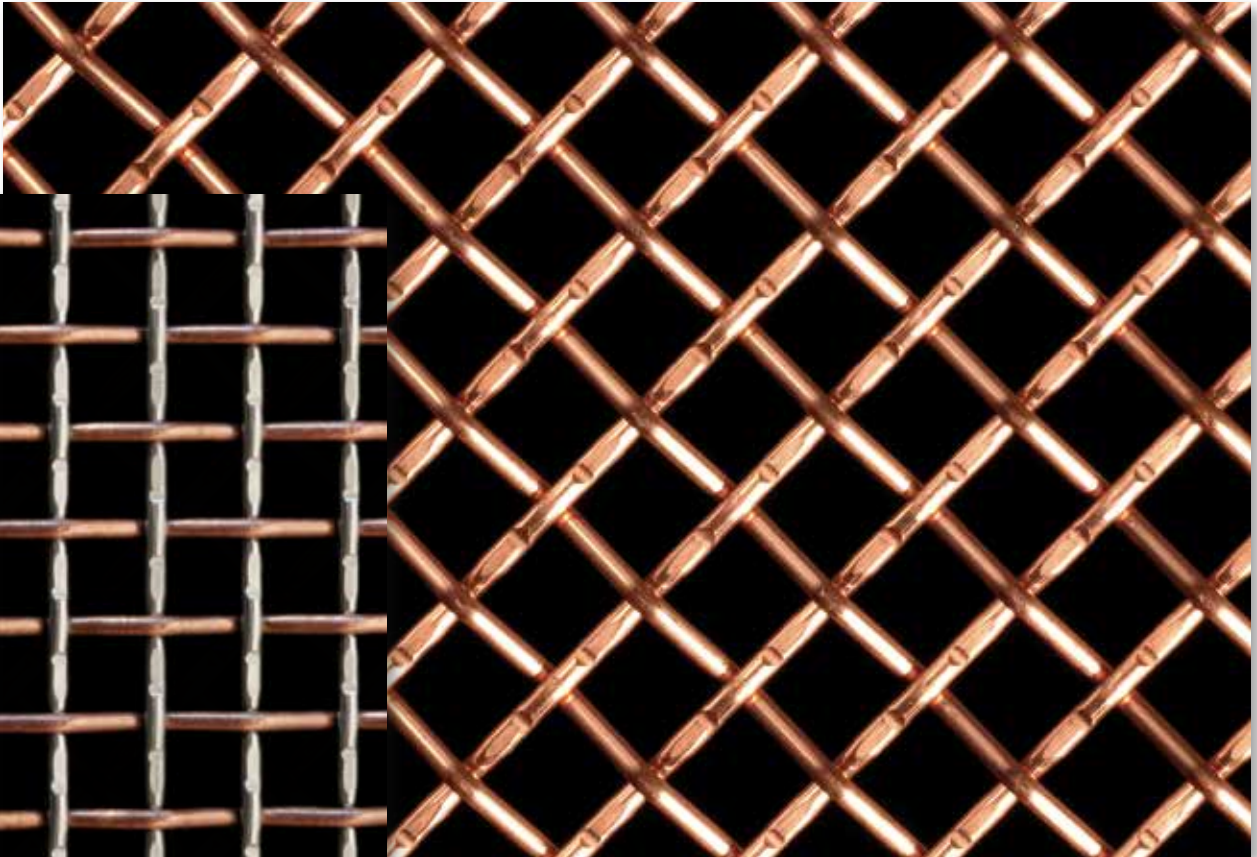


GW913 Highrise (BA)



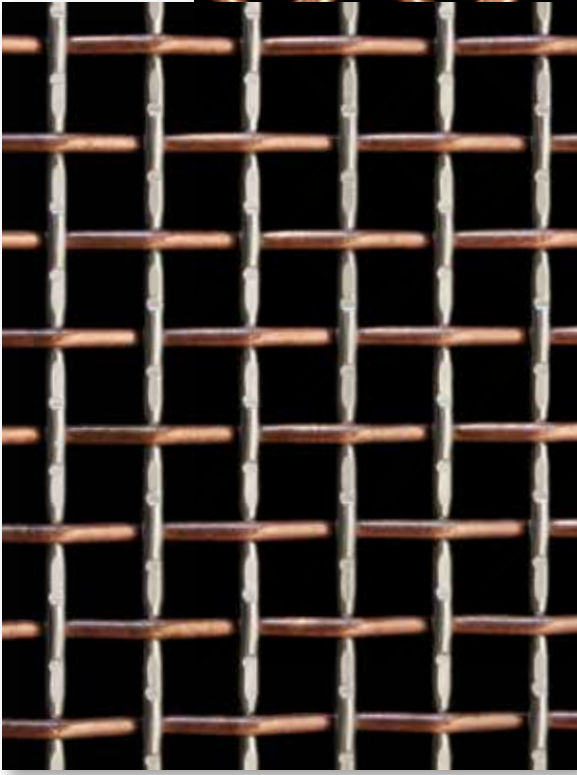
GW914 Corsican (SS)





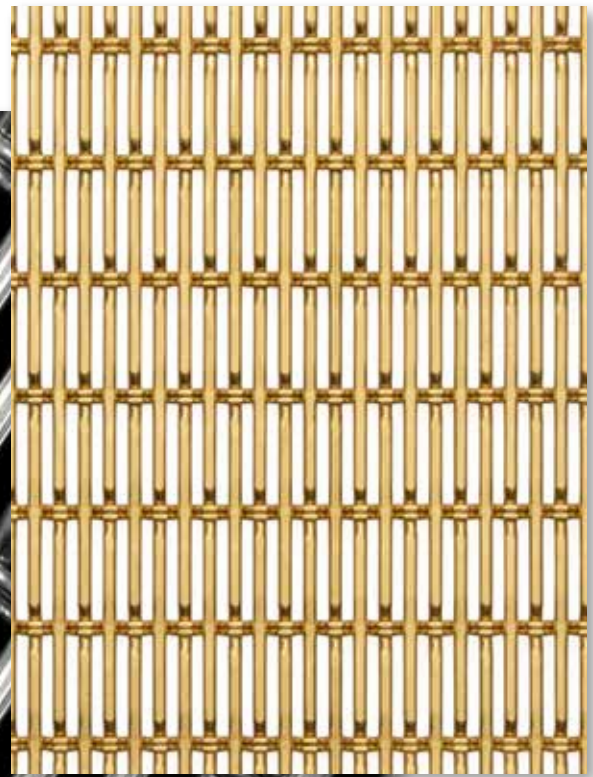
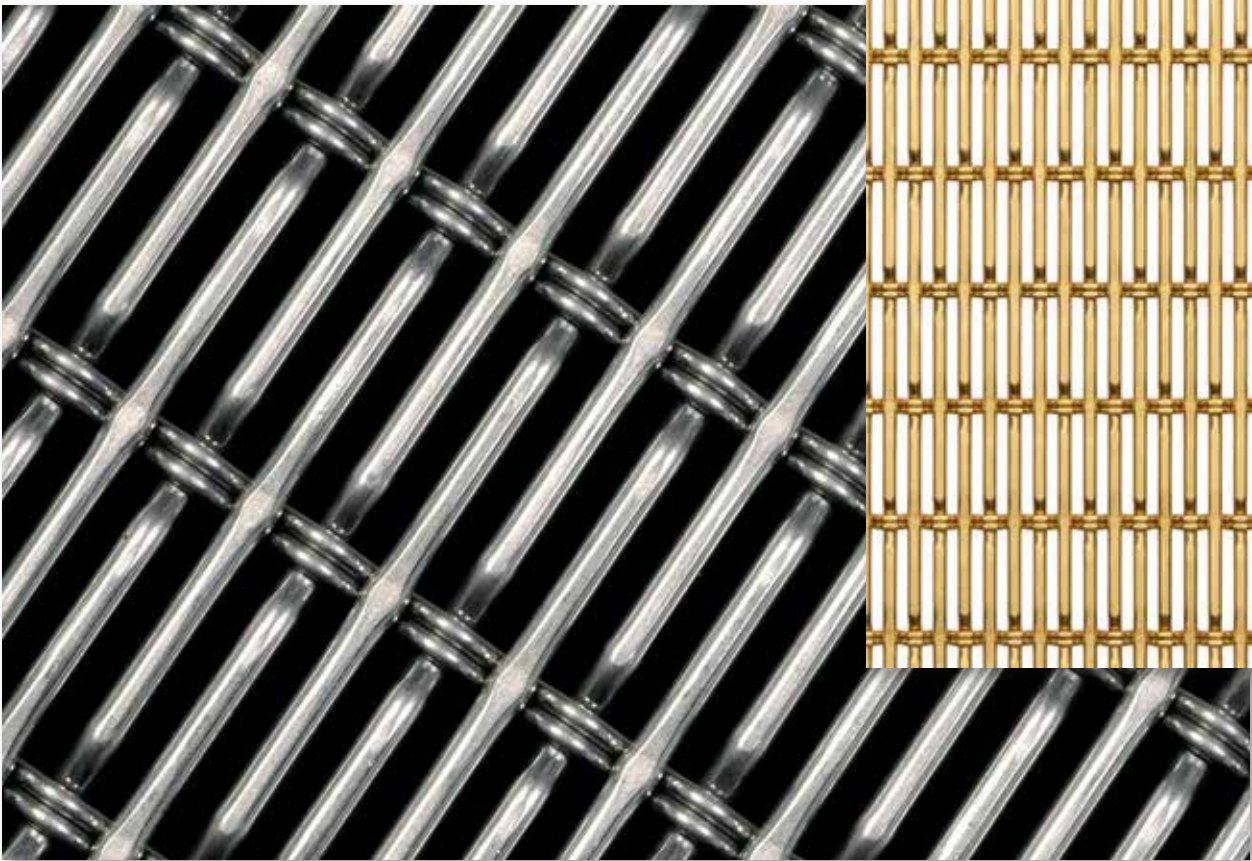
GW915 Intersection (C)

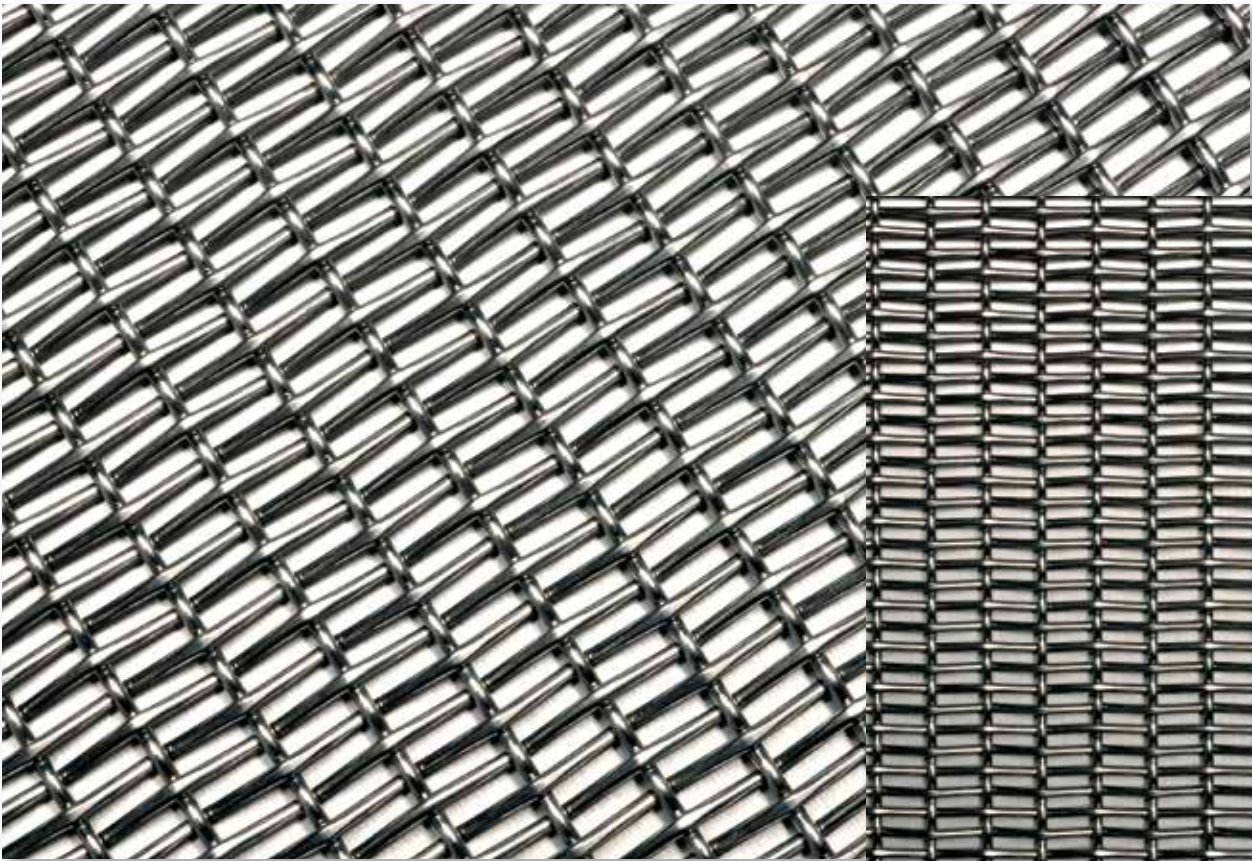
GW916 Linear Cross (CB)



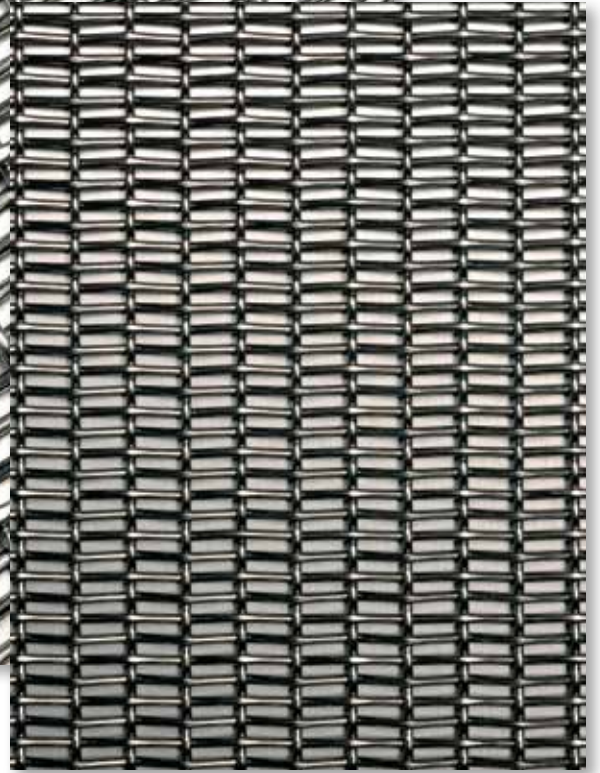
GW915 Intersection (C/SS)

GW916 Linear Cross (SS)





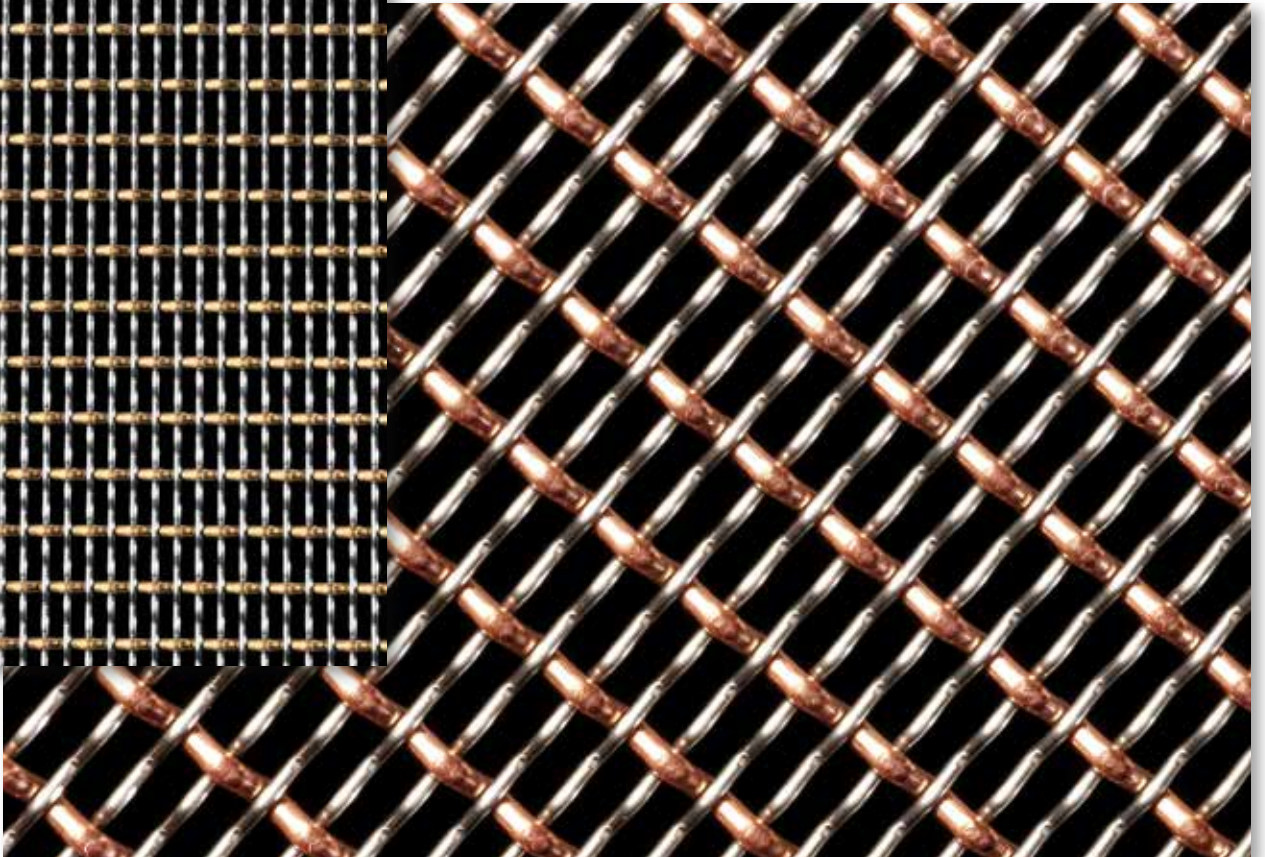
GW917 Organic Weave (SS)

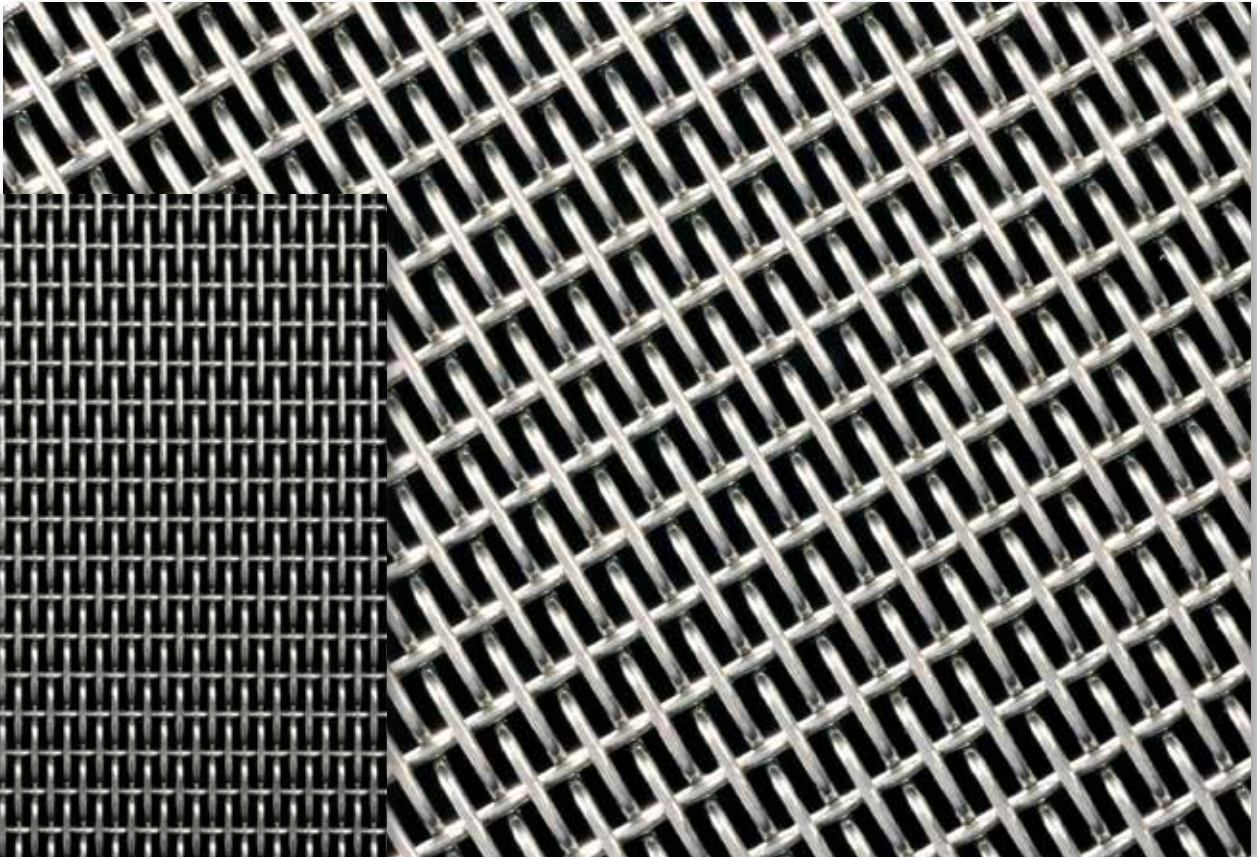


GW918 Madison (CB/SS)



GW918 Madison (C/SS)



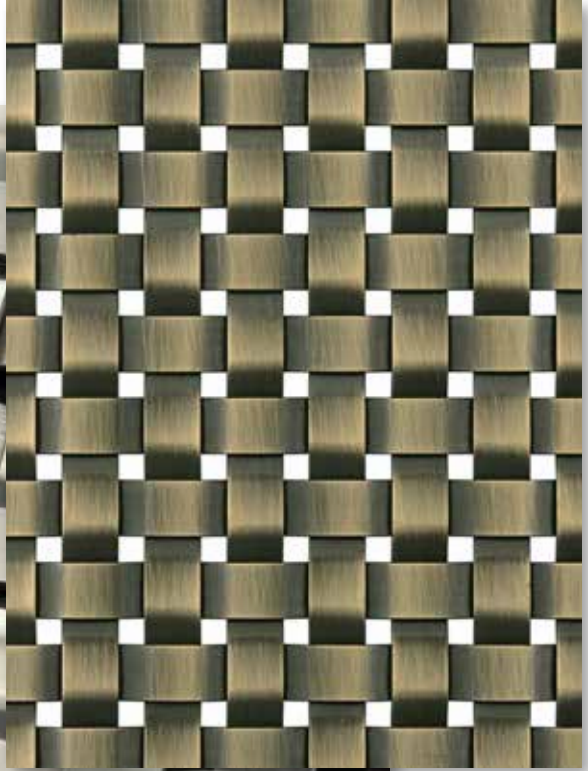
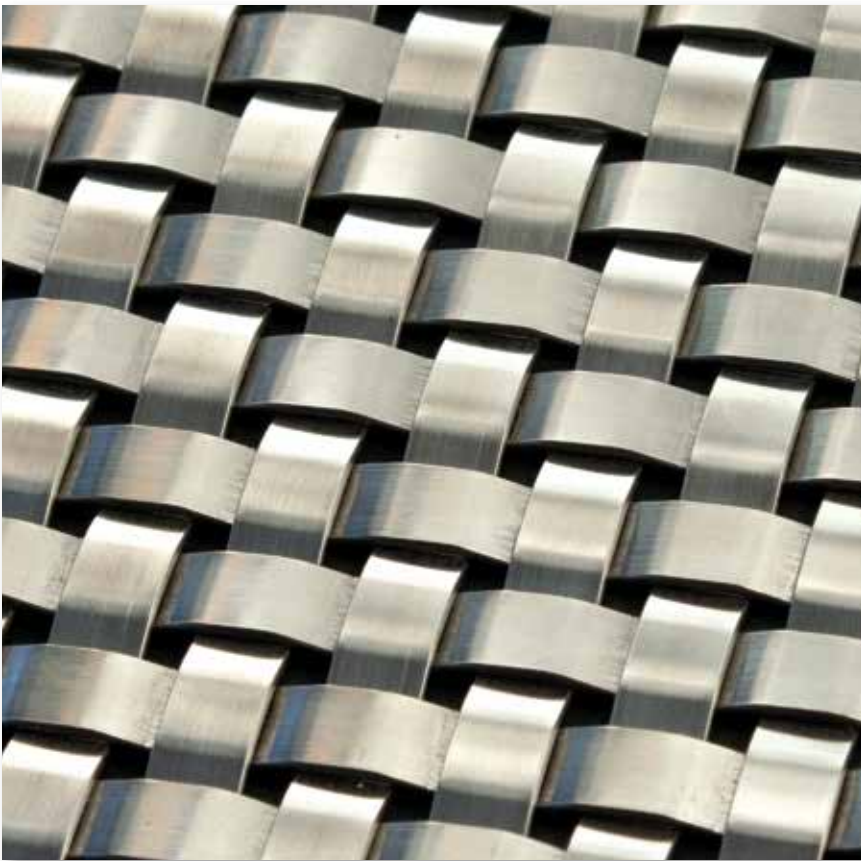


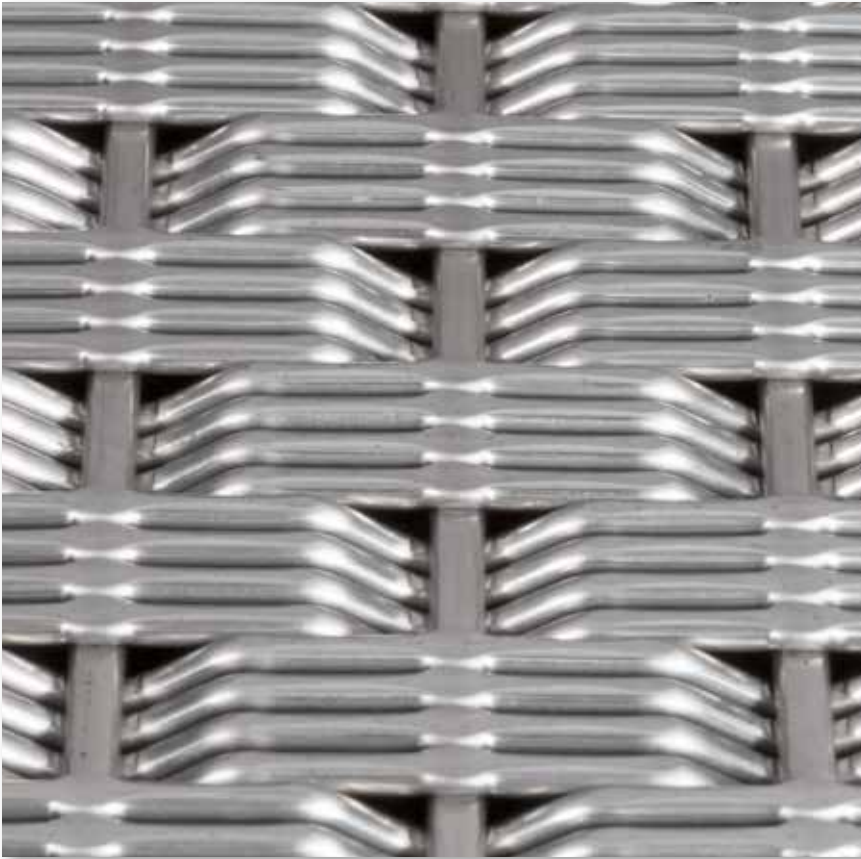
GW919 Micro Weave (SS)

GW921 Chess (BA)

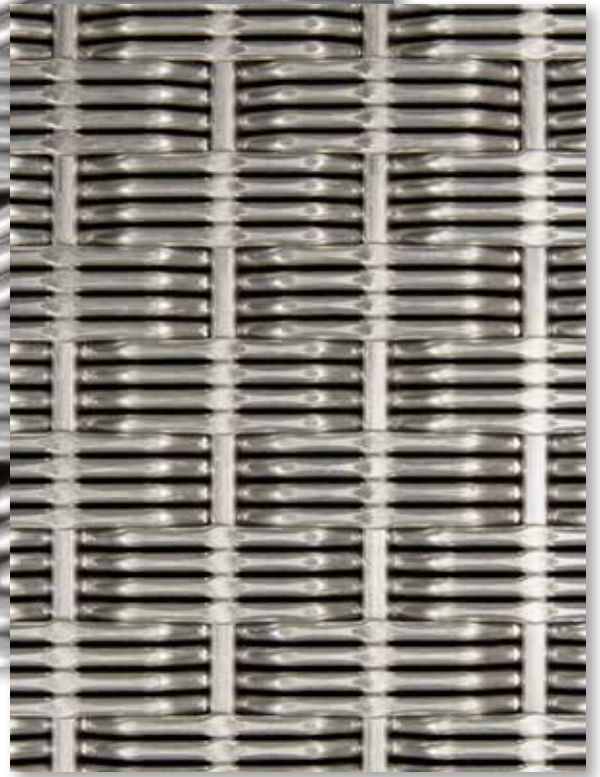


GW921 Chess (SS)

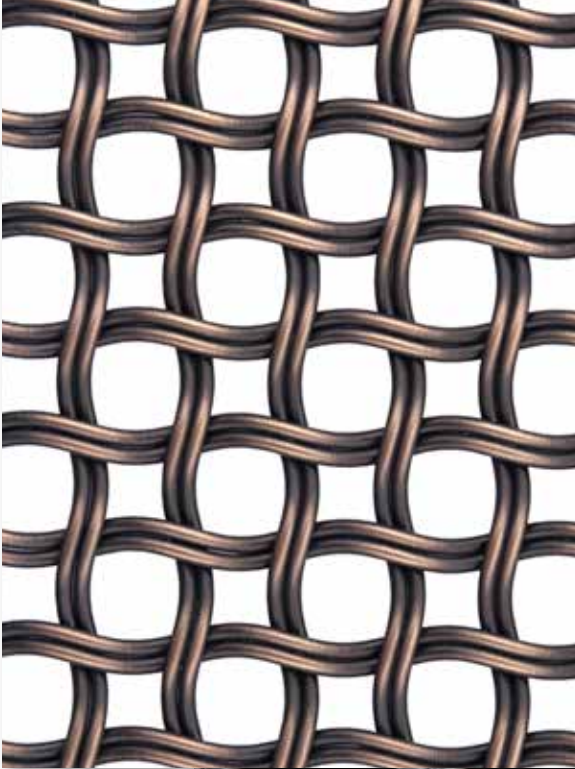




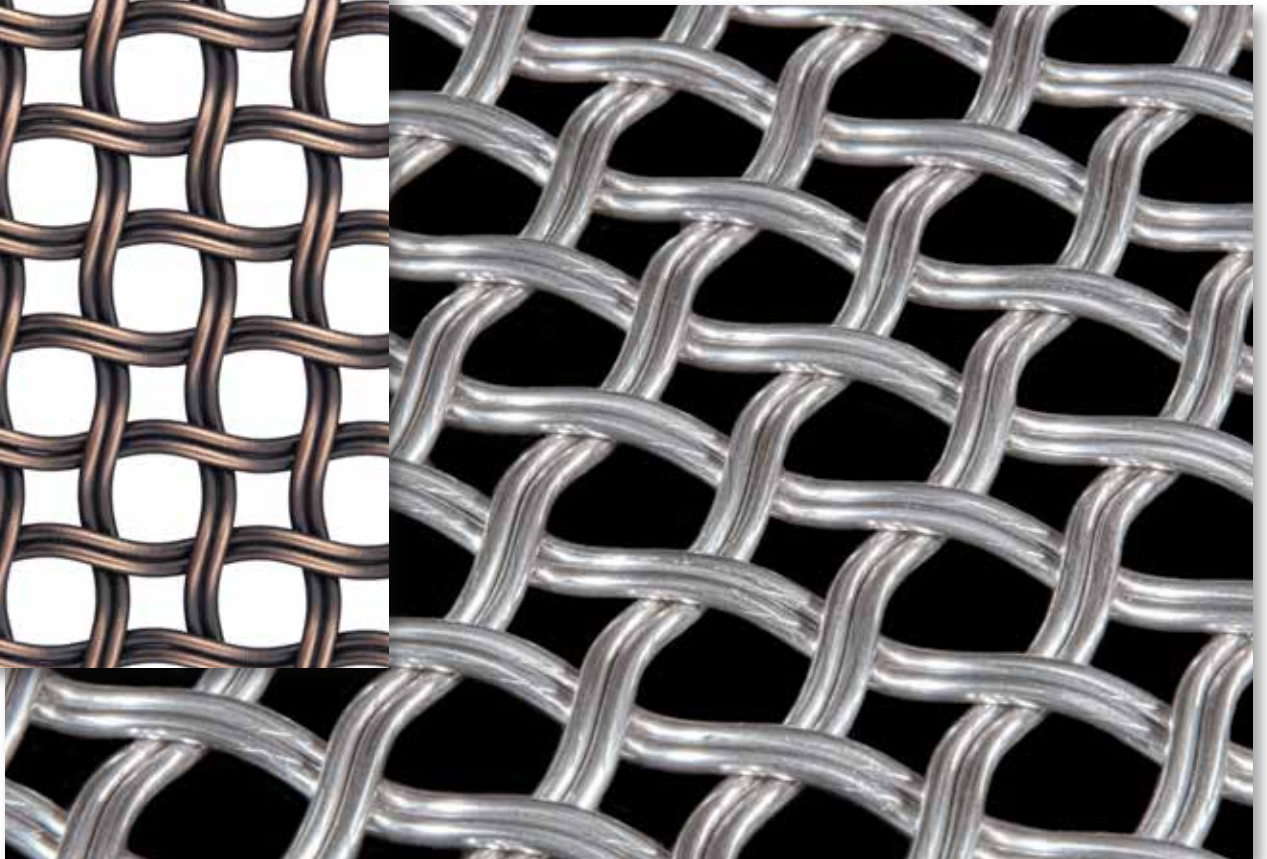
GW923 Cinema (SS)



GW925 Infinity II (CA)



GW925 Infinity II (SS)



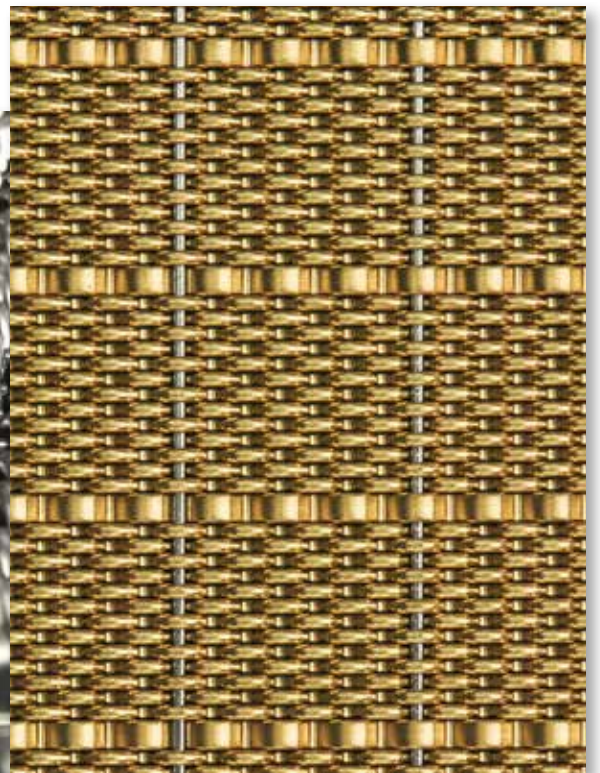
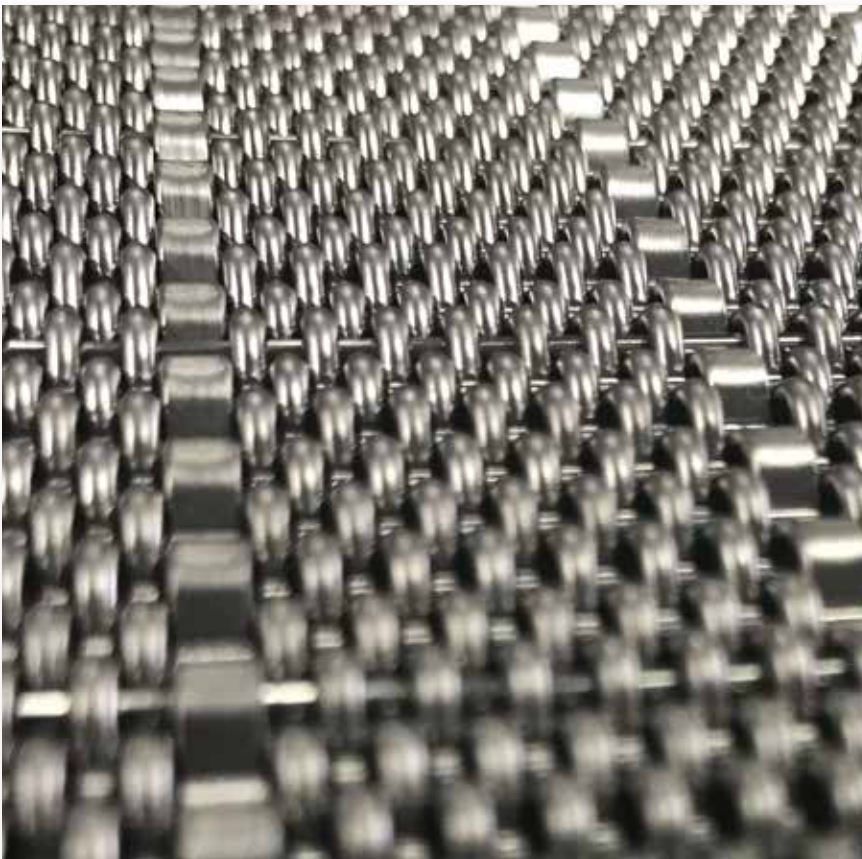


GW926 Franco (SS)



GW927 Akiko II (B/SS)

GW927 Akiko II (SS)





Queen Mary 2, Carinthia Lounge Stage
GW912 Blue Collar (B/B)
Precetti S.R.L.



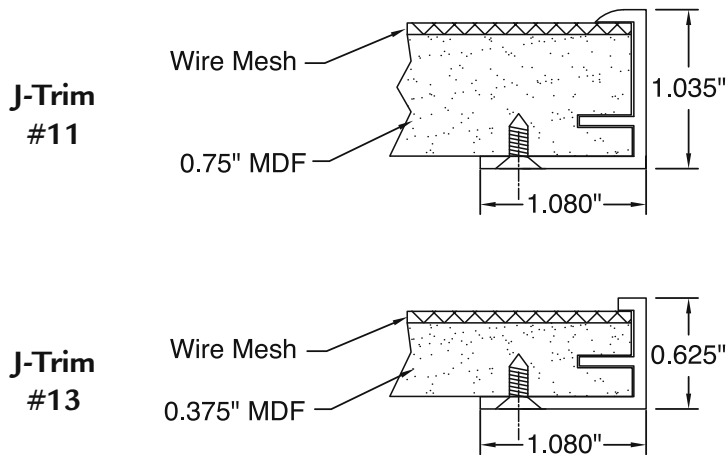
Calgary Zoo ■ GW911 Venetian (SS)
Specifier: Gibbs Gage Architecture



Concourse Buildings, Atlanta, GA ■ GW911 Venetian (SS)
Specifier: ASD, Atlanta, GA ■ Photography: Bill Kettering

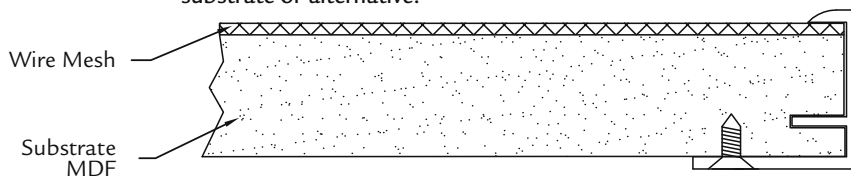
GageWoven can be specified as sheet goods for fabrication by the installing contractor.

In the **concealed panel system** (referred to as CPS), the wire mesh can be secured to the backer panel using a concealed attachment method, either using pressure sensitive adhesive, wire or other attachment techniques. Not all of our 32 standard patterns are suitable for this system. This system is often used for elevator cab interiors, elevator lobbies, and feature walls. Opaque designs do not require a background material; however, open mesh designs can be enhanced with the use of a custom color laminate or other decorative material.



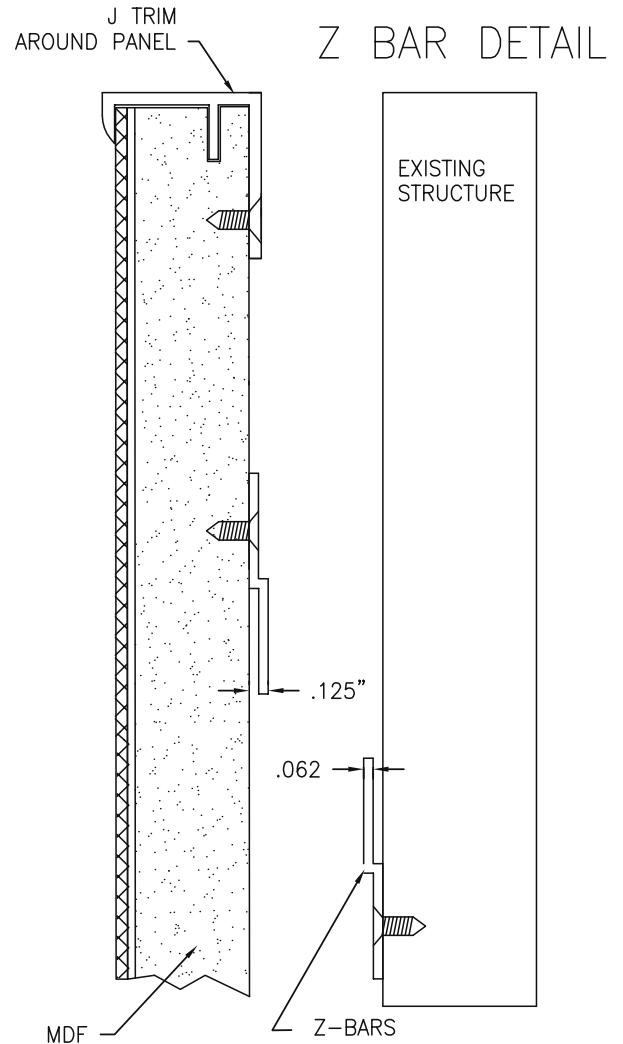
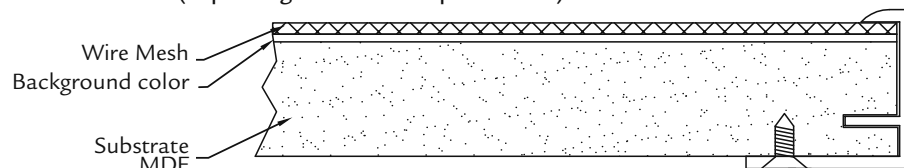
System Version 1

Opaque woven wire mesh attached to MDF (Medium Density Fiberboard) substrate or alternative.



System Version 2

First layer open woven wire mesh, second layer colored background material (depending on customer specification) with MDF substrate.



Z Bar dimensions are typical, but other thicknesses are available.



Red Bank Middle School, Chattanooga, TN ■ GW IF 951 Chapel (SS)
Specifier: TWH Architects



Hyatt Centric, Arlington, VA ■ GW912 Blue Collar (CB/CB)
Specifier: FRCH Design Worldwide, Cincinnati, OH
Fabrication and installation by American Woodworking

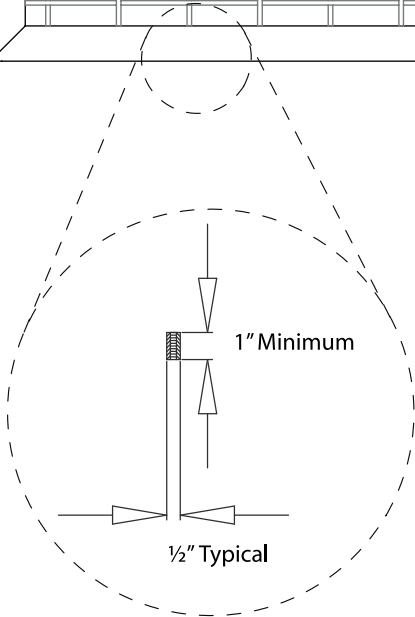
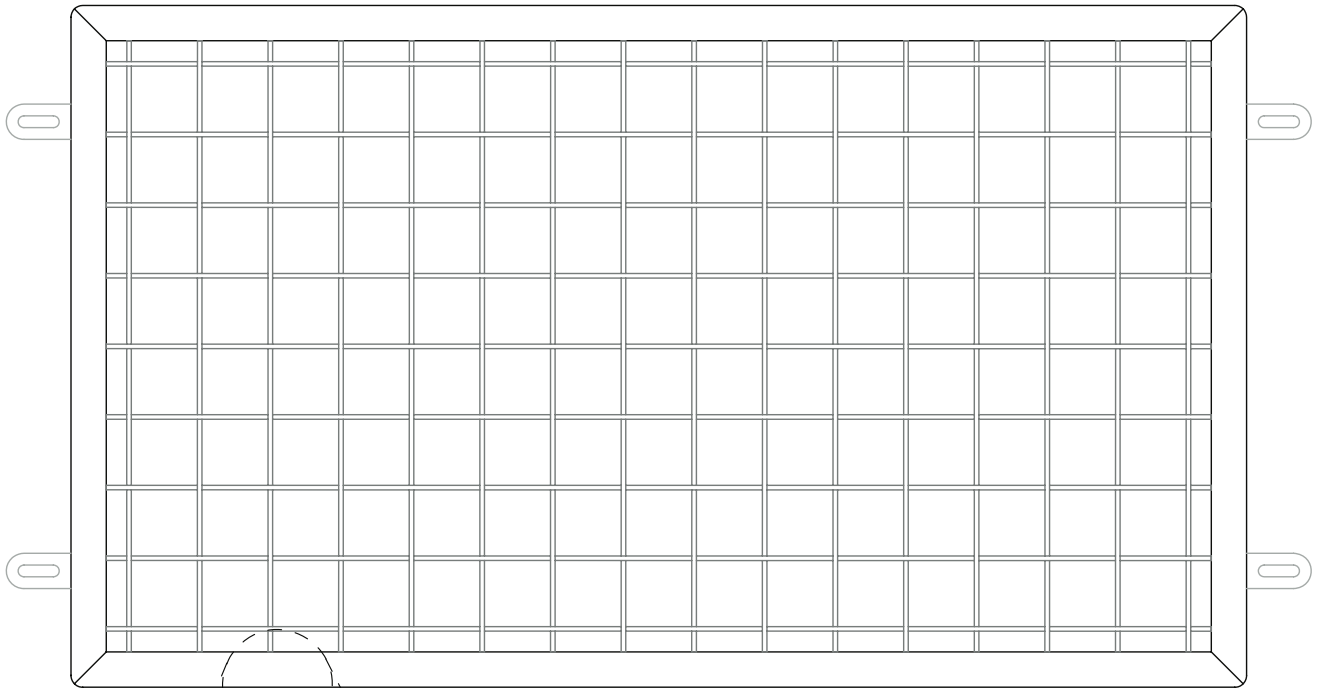
System USS

Universal Spine System (USS) – Precision metal cutting and welding techniques are used to create a unique woven mesh framing system suitable for in-fill panels, wall panels (flush mount or with stand offs) and room dividers.

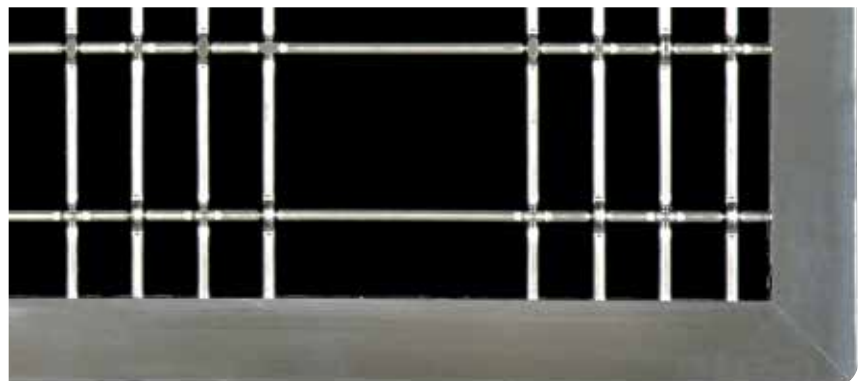
The wire mesh is welded to the center spine then enclosed by two outer covers. Due to the height of the framing, not all of our 32 standard mesh patterns are suitable for USS in-fill panels.

The universal spine outer covers and spine will vary based upon the mesh design chosen. Maximum overall dimensions are 42" x 60" for in-fill panels.

Specific applications should be discussed with the factory. Refer to page 21 or the GageWoven In-Fill Designs page of the web site.



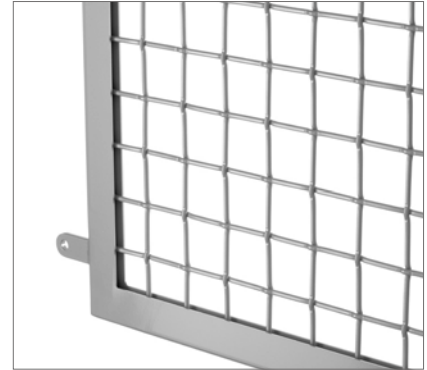
GW IF 950 Trellis (SS)



U-Channel

U-channel is the most common way to provide a safe and economical perimeter edge around a wire mesh panel. The clean and defined square edge, which is 13 gauge, 1.5" construction, is easy to work with and can be used as a framing solution for a wide range of wire mesh patterns and spacings (not all of our 32 standard mesh patterns are suitable for the U-channel system).

GageWoven offers completely fabricated wire mesh U-channel panels.

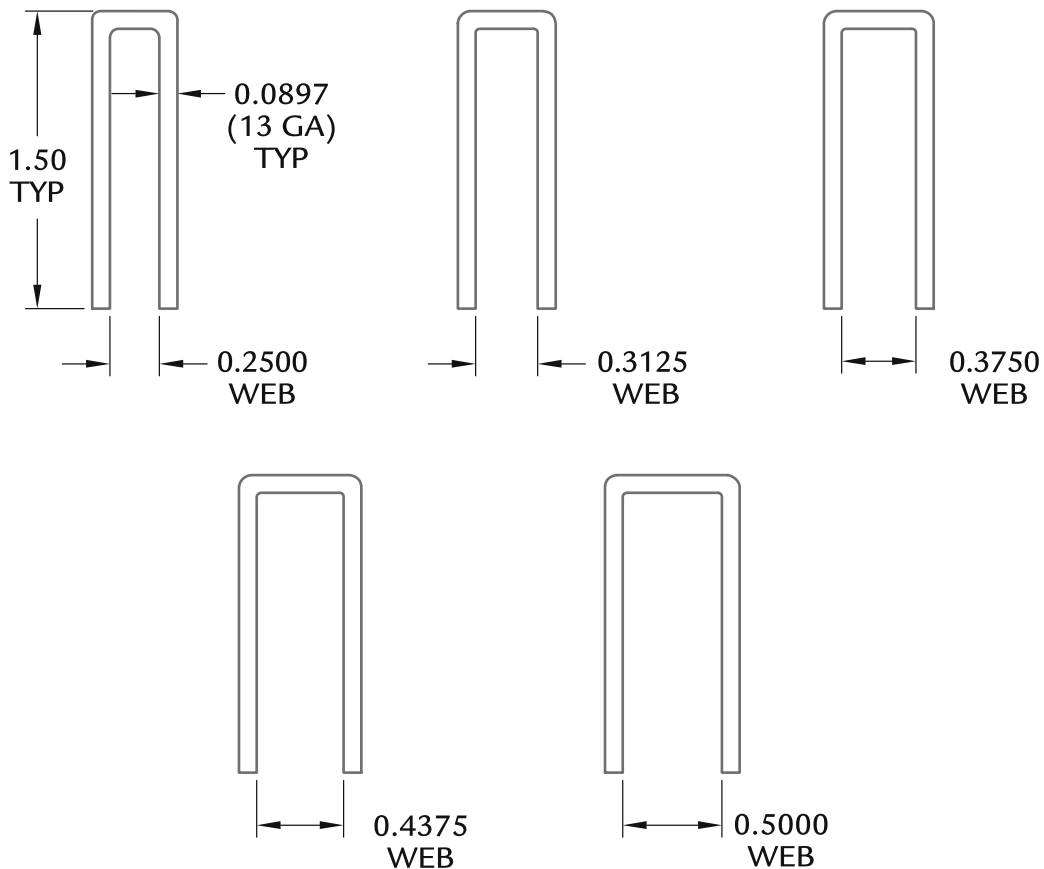


U-Channel Materials

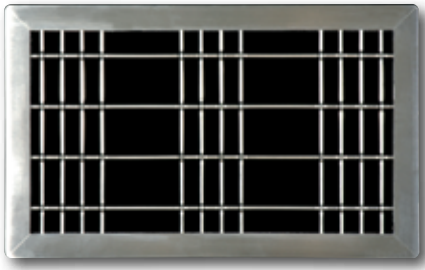
- 304 Stainless Steel
- 316 Stainless Steel

Approximate Weight Per Foot

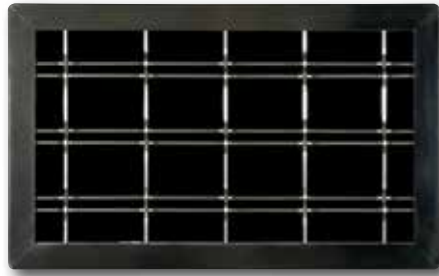
Web	Stainless
.2500"	1.012 lb/ft
.3125"	1.031 lb/ft
.3750"	1.053 lb/ft
.4375"	1.072 lb/ft
.5000"	1.090 lb/ft



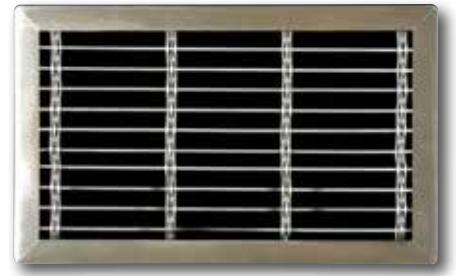
In-Fill Designs & Matrix



GW IF 950 Trellis



GW IF 951 Chapel



GW IF 952 Braided Weave



GW IF 953 University



GW IF 954 Stadium



GW IF 955 Corsican II

Design Number	Name	Max Width	Max Height	Alloys	Weight / SF	Mixed Metals	Thickness	Open Area
GW IF 950	Trellis	240	120	SS	0.85	No	0.148	83.2%
GW IF 951	Chapel	120	240	SS	1.00	No	0.162	82.3%
GW IF 952	Braided Weave	240	120	SS	1.20	No	0.135	74.7%
GW IF 953	University	240	96	SS	1.04	No	0.162	81.3%
GW IF 954	Stadium	240	120	SS	1.01	No	0.162	82.3%
GW IF 955	Corsican II	240	96	SS	1.34	No	0.215	64.0%



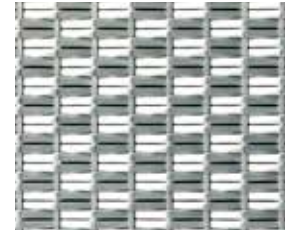
GW900 Escalator (SS)



GW901 Guardian (SS)



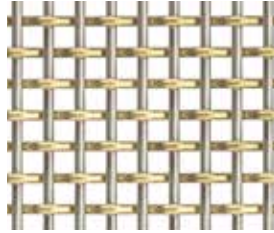
GW902 Snakeskin (SS)



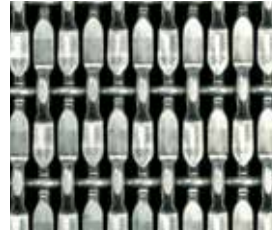
GW903 Baroda (SS)



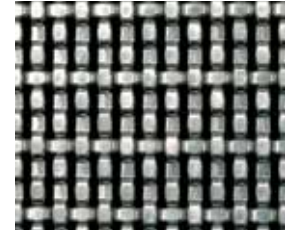
GW905 Watchband (SS)



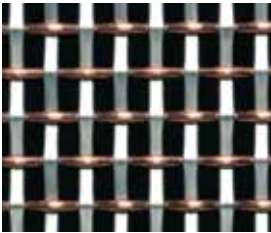
GW906 Round Symmetry (B/SS)



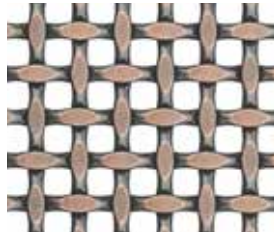
GW907 Metal Steps (SS)



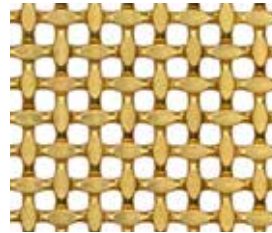
GW908 Jewel Path (SS)



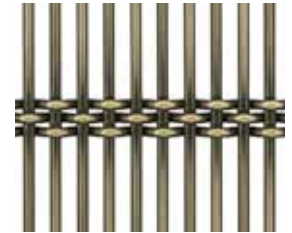
GW909 St. Paul (C/SS)



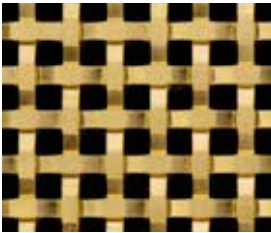
GW910 Ice Dancer (CA)



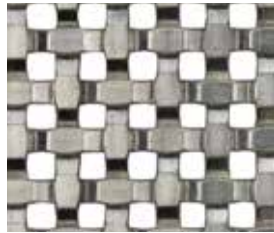
GW910A Ice Dancer II (B)



GW911 Venetian (BA)



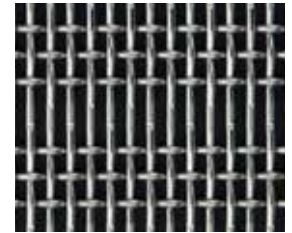
GW912 Blue Collar (CB)



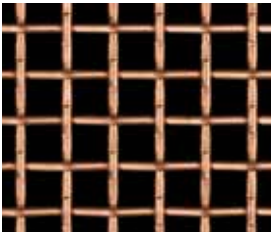
GW912A Blue Collar II (SS)



GW913 Highrise (SS)



GW914 Corsican (SS)



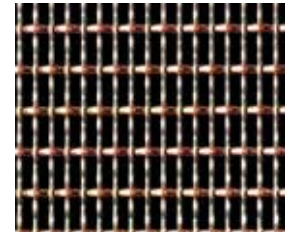
GW915 Intersection (C)



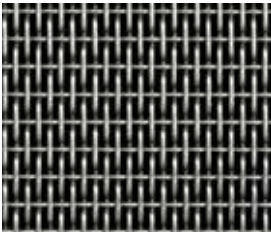
GW916 Linear Cross (SS)



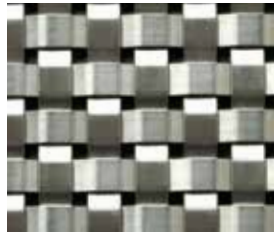
GW917 Organic Weave (SS)



GW918 Madison (C/SS)



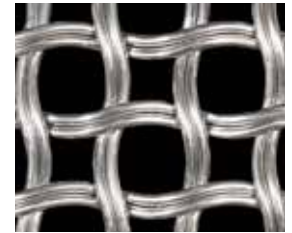
GW919 Micro Weave (SS)



GW921 Chess (SS)



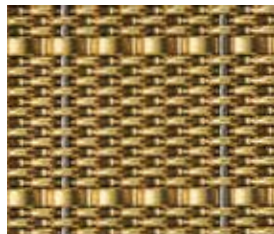
GW923 Cinema (SS)



GW925 Infinity II (SS)



GW926 Franco (SS)



GW927 Akiko II (B/SS)

Design #	Name	Mesh Category	% Open area	Weight lbs per SF	Max "W" Dimension	Max "H" Dimension	Thickness	"W" DIM ALLOY	"H" DIM ALLOY	Mixed Metals	Antique Finish
GW900	Escalator	Opaque	0.00%	2.200	60"	120"	0.206"	SS	SS	No	
GW901	Guardian	Opaque	0.00%	4.270	60"	120"	0.255"	SS	SS	No	
GW902	Snakeskin	Opaque	0.00%	3.250	60"	120"	0.123"	SS	SS	No	
GW903	Baroda	Opaque	0.00%	1.850	60"	120"	0.105"	SS	SS	No	
GW905	Watchband	Opaque	0.00%	3.750	60"	120"	0.241"	SS	SS	Yes	
GW906	Round Symmetry	Fine	44.00%	1.400	72"	240"	0.126"	SS, CB, C, B	SS, CB, C, B	Yes**	
GW907	Metal Steps	Medium	30.00%	2.230	60"	168"	0.198"	SS	SS	No	
GW908	Jewel Path	Fine	27.30%	2.490	60"	168"	0.130"	SS, CB	SS, CB	No	A
GW909	St. Paul	Fine	41.10%	1.630	72"	120"	0.140"	SS, CB, C, B	SS	Yes*	
GW910	Ice Dancer	Medium	36.90%	2.940	60"	168"	0.156"	SS	SS	No	A
GW910A	Ice Dancer II	Medium	31.0%	2.05	72"	168"	0.100"	SS, CB, B	SS, CB, B	No	A
GW911	Venetian	Medium	42.30%	2.300	96"	168"	0.290"	SS, CB, C, B	SS	Yes*	A
GW912	Blue Collar	Fine	25.30%	1.780	60"	168"	0.080"	CB, B	CB, B	No	
GW912A	Blue Collar II	Fine	21.60%	2.150	60"	120"	0.105"	SS	SS	No	A
GW913	Highrise	Medium	31.30%	1.570	72"	168"	0.143"	SS	SS	No	A
GW914	Corsican	Fine	43.50%	1.180	72"	168"	0.108"	SS	SS	No	
GW915	Intersection	Medium	61.30%	1.510	96"	240"	0.210"	SS, CB, C, B	SS, CB, C, B	Yes*	A
GW916	Linear Cross	Fine	39.00%	1.674	72"	168"	0.130"	SS, CB	SS, CB	No	
GW917	Organic Weave	Fine	38.00%	1.220	60"	120"	0.108"	SS	SS	No	
GW918	Madison	Fine	53.90%	0.840	72"	168"	0.098"	CB, C, B	SS	Yes*	
GW919	Micro Weave	Fine	39.90%	0.964	72"	168"	0.076"	SS	SS	No	
GW921	Chess	Medium	9.70%	2.300	72"	168"	0.080"	SS, B	SS, B	No	A
GW923	Cinema	Opaque	20.00%	3.050	60"	120"	0.222"	SS	SS	No	
GW925	Infinity II	Medium	41.40%	1.700	60"	120"	0.160"	SS	SS	No	A
GW926	Franco	Opaque	0.00%	3.700	60"	120"	0.315"	SS	SS	No	
GW927	Akiko II	Opaque	0.00%	2.270	60"	120"	0.175"	SS, B, CB	SS	No	

* If mixed metal, one alloy must be Stainless Steel (SS)

** If mixed metal using a commercial bronze alloy, "H" must be Stainless Steel

SS = Stainless Steel

B = Brass

CB = Commercial Bronze

C = Copper

A = Antique Brass (BA) or Antique Copper (CA) finishes on Mild Steel. Size limitations apply.



Gage is committed to a greener planet.

The Gage Corporation International is dedicated to continual environmental improvement. Gage, through its primary manufacturer, signed an Environmental Cooperative Agreement in 2002 with the Wisconsin Department of Natural Resources; this agreement has been extended through 2012 until finalization of Green Tier entry. Additionally, our primary manufacturing facility has earned ISO 14001 certification.

As a member of the US Green Building Council (USGBC) Gage promotes conservation, recycling and efficient use of energy. The majority of our metal products contain a significant amount of recycled material creating an end product that is

both recycled and recyclable. Gage is committed to a greener planet and has been since 1988.

A recycling procedure is integrated into every step of the GageWoven production process. The manufacturing process uses very little energy by being an efficient, entirely cold-forming one that utilizes machines with the latest variable speed technology. The stainless steel wire used for GageWoven is composed of an average of 90% recycled material. Less than 5% of the wire used in manufacturing becomes scrap and is recycled by a local recycling company that is ISO 14001 certified to further assure that our waste material is handled in a manner that respectful of the environment.

Specification Guidelines

Specifying GageWoven is a simple process. Follow the guidelines listed below. Complete architectural (technical) specifications and installation guidelines can be downloaded from our website at www.gagecorp.net or contact the factory.

Item: Gage Vertical Surfacing (GVS) – GageWoven

Design: Enter specified design, i.e. GW900 (Guardian)

Metal: Specify metal finish(es) as required. Refer to the matrix on page 23. When specifying two metal finishes, keep in mind that the secondary metal (copper alloy) is typically available in the horizontal direction (W dimension). For example, design GW909 (St. Paul) specified as C/SS would indicate a copper wire in the horizontal direction (width “W” dimension) and the stainless steel wire would be in the vertical direction (height “H” dimension).

Size: Refer to the matrix for maximum size of sheet goods by design. Specify width (horizontal or “W” dimension) and height (vertical or “H” dimension).

Topcoat: Copper alloys (C, CB, B) require a protective topcoat or they are subject to oxidation. Specify clear topcoat on all copper alloys unless you want the metal to patina naturally.

System: Specify fabrication by installer, CPS Trim, USS, or U-Channel.

Note: Contact the factory (800-786-4243) or its authorized representative with any questions regarding specifications. Either will assist or write project specifications upon request.

777 S. Black River St, Suite 2 ■ Sparta, WI 54656
TF: 800-786-4243 ■ PH: 608-269-7447
FX: 608-269-7622
info@gagecorp.net ■ www.gagecorp.net

GAGE
THE GAGE CORPORATION, INT.