

GAGEMETAL PVD

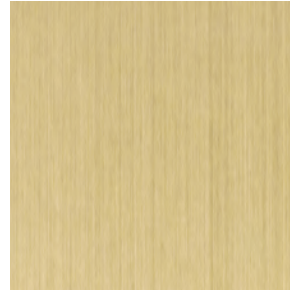
Physical Vapor Deposition (PVD) is the process of combining metal vapor with gases and applying them to stainless steel using a vacuum chamber.



GM423 PVD CH1
Pallinato
Champagne 1 PVD with FRC



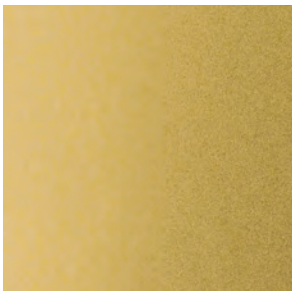
GM423 PVD CH2
Pallinato
Champagne PVD with FRC



GM438 PVD CH1
Long Grain Satin
Champagne 1 PVD with FRC



GM438 PVD CH2
Long Grain Satin
Champagne PVD with FRC



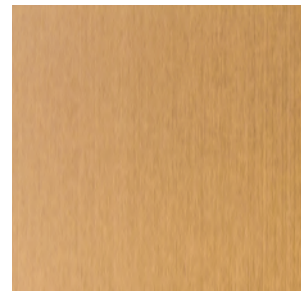
GM423 PVD BR2
Pallinato
Brass PVD with FRC



GM423 PVD C2
Pallinato
Copper PVD with FRC



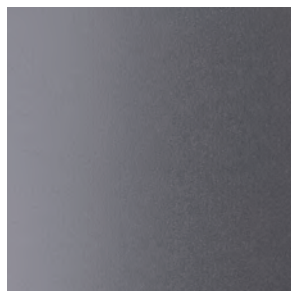
GM438 PVD BR2
Long Grain Satin
Brass PVD with FRC



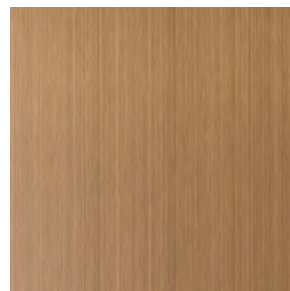
GM438 PVD C2
Long Grain Satin
Copper PVD with FRC



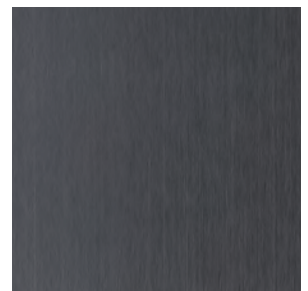
GM423 PVD CB
Pallinato
Copper Bronze PVD with FRC



GM423 PVD BLK2
Pallinato
Black PVD with FRC



GM438 PVD CB
Long Grain Satin
Copper Bronze PVD with FRC



GM438 PVD BLK2
Long Grain Satin
Black PVD with FRC

Why PVD?

- The process creates a micro-thin, transparent, colored film on the stainless steel which increases the durability without adding to the weight of the panel.
- The process of creating the PVD coated panel is more environmentally friendly than other metal coating processes as it doesn't create pollutants or waste.
- The PVD film is resistant to wear and provides a resilient surface that is appropriate for interior applications.
- Fingerprint Resistant Coating (FRC) aids in ease of removal of fingerprints and other unwanted adornments by diminishing the ability of marks to adhere to the surface.

What installation options can be used?

- **Gage System E (Extrusion)** – Gage will powder coat extrusion to coordinate
- **Stand-Offs** – By contractor
- **Direct Glue** – Use appropriate commercial grade construction adhesive to mount to surface (i.e. sheetrock, MDF, or other)
- **Elevator Doors** – Materials can be formed at a 90° angle without damage to the PVD finish
- **Column Covers** – PVD can be roll formed down to a minimum 12" diameter

What facts do I need to know about GAGEMETAL PVD?

- Available in six standard colors.
- Standard sheet size is 48" x 96". Sheets in 48" x 120" are also available.
- Approximate weight is 1.512 lbs/SF.
- Sheets are 20 gauge (.036"/0.91 mm thick) standard. 18 gauge and 16 gauge sheets are also available with extended lead time.
- Sheets can be easily cleaned with a mild soap solution and a soft, lint-free cloth.
- Sheets can be cut to size with a shear.

How can GAGEMETAL PVD be customized?

Laser cutting, water jet cutting, brake forming, and roll forming are just a few of the ways Stainless Steel PVD can be customized by the contractor.

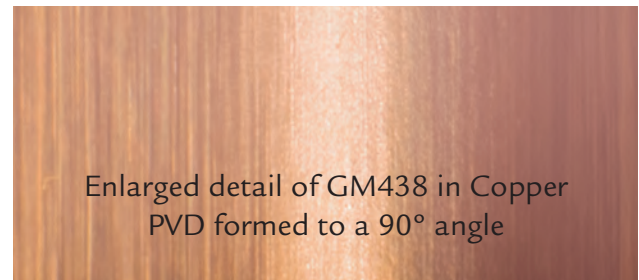


Table of design and finish combinations

	Brass 2 (BR2)	Copper 2 (C2)	Champagne 1 (CH1)	Champagne 2 (CH2)	Copper Bronze (CB)	Black 2 (BLK2)
GM423 Pallinato	GM423 BR2	GM423 C2	GM423 CH1	GM423 CH2	GM423 CB	GM423 BLK2
GM438 Long Grain Satin	GM438 BR2	GM438 C2	GM438 CH1	GM438 CH2	GM438 CB	GM438 BLK2
GM457 Mirror (no FRC) <i>(Available on special request)</i>	GM403 BR2	GM403 C2	GM403 CH1	GM403 CH2	GM403 CB	GM403 BLK2

Digital print processes cannot exactly replicate the color and finish nuances of our metal products. Please request a physical sample for an accurate color match.