

GAGEetch

GAGE VERTICAL SURFACING

Etching is a subtractive process which uses chemicals to produce unique, complex designs onto the surface of a metal sheet.

Standard Designs



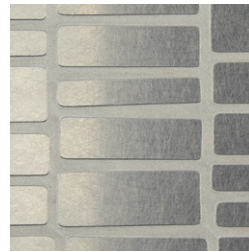
GE500 SS #4
Varied Stripes
#4 Brushed
Stainless Steel



GE501 SS #4
Fusion Weave
#4 Brushed
Stainless Steel



GE502 SS #4
Seven Degrees
#4 Brushed
Stainless Steel



GE503 SS #4
Mosaic
#4 Brushed
Stainless Steel



GE504 SS #4
Brush Strokes
#4 Brushed
Stainless Steel



GE500 BR #4
Varied Stripes
#4 Brushed
Muntz (Brass)



GE501 BRP #4
Fusion Weave
#4 Brushed
Muntz (Brass) +
Patination



GE502 BR #4
Seven Degrees
#4 Brushed
Muntz (Brass)



GE503 BR #4
Mosaic
#4 Brushed
Muntz (Brass)



GE504 BRP #4
Brush Strokes
#4 Brushed
Muntz (Brass) +
Patination

Patination is a chemical reaction which creates a brown or bronze finish through oxidation on Muntz (Brass).

Table of design and finish combinations

Etch Design	#4 Brushed Stainless Steel	#4 Brushed Muntz (Brass)	#4 Brushed Muntz (Brass) + Patination
GE500 Varied Stripes	GE500 SS #4	GE500 BR #4	GE500 BRP #4
GE501 Fusion Weave	GE501 SS #4	GE501 BR #4	GE501 BRP #4
GE502 Seven Degrees	GE502 SS #4	GE502 BR #4	GE502 BRP #4
GE503 Mosaic	GE503 SS #4	GE503 BR #4	GE503 BRP #4
GE504 Brush Strokes	GE504 SS #4	GE504 BR #4	GE504 BRP #4

What facts do I need to know about GageEtch?

- Five (5) standard etch patterns.
- Available in #4 Brushed 304 Stainless Steel or #4 Brushed Muntz (Brass).
- Sheet size is 48" x 96".
- Approximate weight is 2.016 lbs/SF.
- Sheets are 0.050"/1.2 mm thick.
- When cutting, it is recommended that a sharp shear or bandsaw be used.
- Sheets can be easily cleaned with a mild soap and water solution or non-abrasive cleaner (i.e. Windex®) and a soft, lint-free cloth.
- Muntz (Brass) sheets are etched and then a standard clear coat applied to prevent oxidation or they can be etched and patinated to produce a beautiful light to dark bronze finish.
- Collaboration on custom designs is encouraged.

What installation options can be used?

- **Gage System E (Extrusion)** – Gage will powder coat extrusion.
- **Stand-Offs** – By contractor
- **Direct Glue** – Use appropriate commercial grade construction adhesive to mount to surface (i.e. sheetrock, MDF, or other).
- **Elevator Doors** – Etched panels can be pre-formed at the factory to a 90° angle without damage to the finish. A clear topcoat is applied after the panels have been formed.

Digital print processes cannot exactly replicate the color and finish nuances of our metal products. Please request a physical sample for an accurate color match.