

GAGECARVE® Standard Finishes



Aged Bronze



Arctic White



Aztec Gold



Brass



Bronze



Bronze Gold



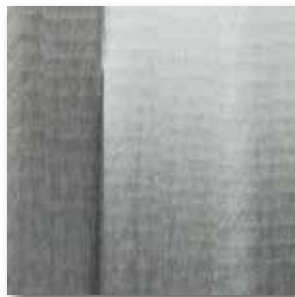
Burnished Bronze



Champagne



Champagne Gold



Clear Sailing



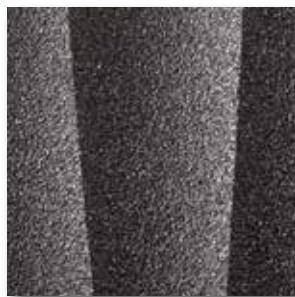
Copper Bronze



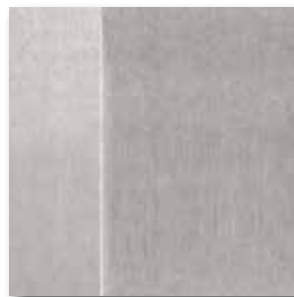
Ivory Texture



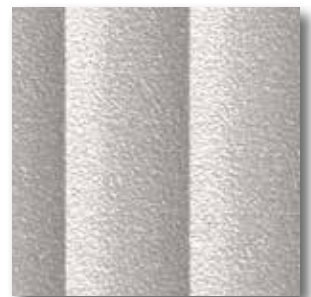
Matte Black



Metallic Black



Nickel



Nickel Metallic



Pewter



Sandstone



Statue Bronze



Titanium

Standard Finish Specifications

Standard Finishes	Code	Type	Gloss	Color Variance	Hardness ASTM D-3363	AAMA	Interior Only
Aged Bronze	AB	PC	Matte	+/-2 Delta E	4H	2603	Yes
Arctic White	AW	PC	Matte	+/-2 Delta E	H	2604	
Aztec Gold	AG	PC	Gloss	+/-2 Delta E	2H	2604	
Brass	BR	AN	Polished	+/- 5 Delta E	4-6H	611	
Bronze	BZ	AN	Polished	+/- 5 Delta E	4-6H	611	
Bronze Gold	BG	AN	Polished	+/- 5 Delta E	4-6H	611	
Burnished Bronze	BB	PC	Matte	+/-2 Delta E	H	2603	Yes
Champagne	CH	AN	Polished	+/- 5 Delta E	4-6H	611	
Champagne Gold	CG	PC	Satin	+/-2 Delta E	2H	2603	Yes
Clear Sailing	CS	PC	Gloss	+/-2 Delta E	2-4H	2604	
Copper Bronze	CB	AN	Polished	+/- 5 Delta E	4-6H	611	
Ivory Texture	IT	PC	Semi-Gloss	+/-2 Delta E	0-2H	2603	Yes
Matte Black	BK	AN	Matte	+/- 5 Delta E	4-6H	611	
Metallic Black	MB	PC	Matte	+/-2 Delta E	H	2604	
Nickel	NK	AN	Polished	+/- 5 Delta E	4-6H	611	
Nickel Metallic	NM	PC	Satin	+/-2 Delta E	2-4H	2604	
Pewter	PW	PC	Matte	+/-2 Delta E	H	2603	Yes
Sandstone	SS	PC	Satin	+/-2 Delta E	2-4H	2604	
Statue Bronze	SB	PC	Satin	+/-2 Delta E	3H	2603	Yes
Titanium	TT	PC	Semi-Gloss	+/-2 Delta E	2H	2603	Yes