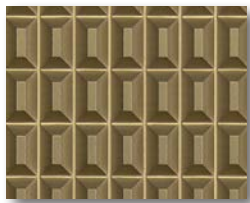


GAGECARVE®

Standard Designs



C1000 Museum
(Bronze Gold)



C1001 Miami
(Clear Sailing)



C1002 Linear
(Champagne)



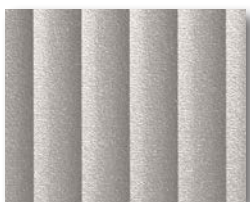
C1003 Ribbon
(Arctic White)



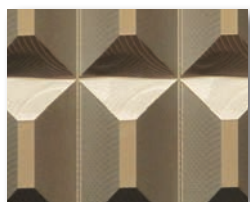
C1004 Organic
(Copper Bronze)



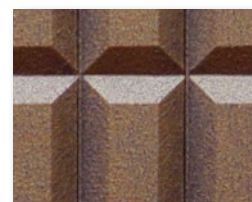
C1005A Rough Cut
(Nickel)



C1006 Horizon
(Nickel Metallic)



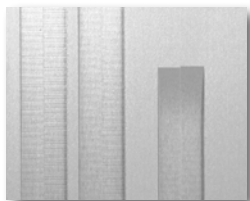
C1008 Pyramid
(Bronze Gold)



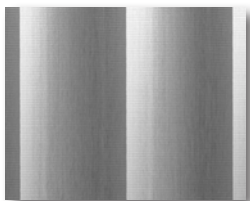
C1010 Plateau
(Aged Bronze)



C1011 Ripple
(Sandstone)



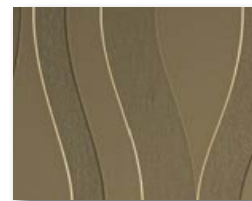
C1012 Bamboo
(Nickel)



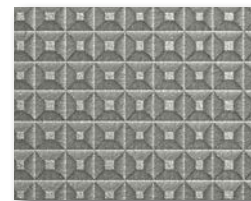
C1013 Waves
(Nickel)



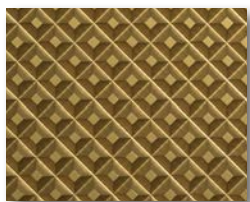
C1014 Origami
(Copper Bronze)



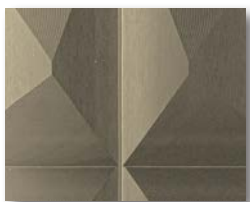
C1015 Reflections
(Bronze)



C1016 Diamond Cut
(Nickel Metallic)



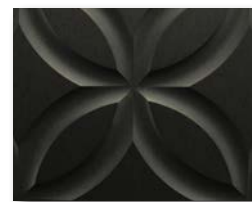
C1016D Diamond Cut
(Brass)



C1017 Origami II
(Champagne)



C1018 Manhattan
(Bronze Gold)



C1019 Encircle
(Matte Black)



C1020 Crossroads
(Clear Sailing)



NEW C1021 V-Groove
(Burnished Bronze)



NEW C1022 Pathways
(Pewter)

Designs shown are not to scale. Digital print processes cannot exactly replicate the color and finish nuances of our metal products. Please request a physical sample for an accurate color match.

GageCarve Standard Finishes



Aged Bronze



Arctic White



NEW Aztec Gold



Brass



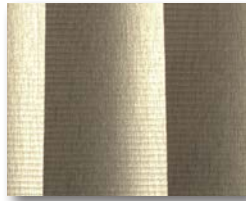
Bronze



Bronze Gold



NEW Burnished Bronze



Champagne



NEW Champagne Gold



Clear Sailing



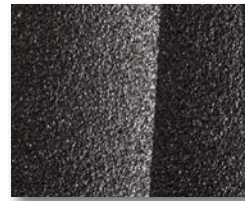
Copper Bronze



NEW Ivory Texture



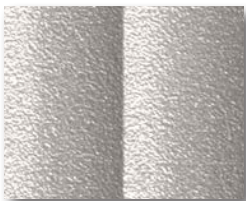
Matte Black



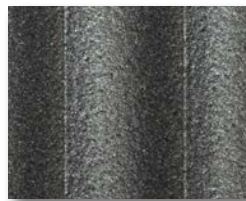
Metallic Black



Nickel



Nickel Metallic



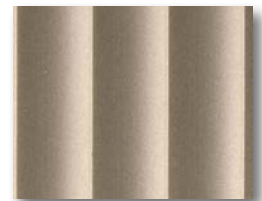
Pewter



Sandstone



NEW Statue Bronze



NEW Titanium

What facts do I need to know about GageCarve?

- Twenty-two (22) standard patterns and twenty (20) standard finishes.
- Sheet sizes are 48" x 96" or 48" x 120".
- Weight is 0.85-1.45 lbs per square foot depending upon design.
- Sheets are .125" or .160" (3.18-4.06 mm) thick of solid aluminum.
- When cutting, it is recommended that a table saw with carbide tip blade be used.
- Appropriate for interior and exterior wall surfacing, feature walls, elevator doors (select patterns), elevator interiors, column covers, millwork accents and many other architectural applications.

- Sheets can be easily cleaned with a mild soap and water solution or non-abrasive cleaner followed by drying with a soft, lint-free cloth.
- Class A Fire Rated

What installation options can be used?

- **Gage System E (Extrusion)** – Gage will powder coat extrusion to compliment
- **Stand-Offs** – By contractor
- **Direct Glue** – Use appropriate commercial grade construction adhesive to mount to surface (i.e. sheetrock, MDF, or other)

