



# **GAGECARVE<sup>®</sup>**

## **GAGE VERTICAL SURFACING**

C 1014 Origami (Brass)



Harp Fisher Island Elevator Doors – Fisher Island, FL  
C 1004 Organic (Champagne)  
Levine, Calderin & Associates – Miami, FL



Philadelphia Sheraton Column Cover – Philadelphia, PA  
C 1000 Museum (Champagne)  
Interior Design Force – New York, NY

GageCarve® is a primary product of the Gage Vertical Surfacing program. Each sheet of GageCarve is individually crafted of .125"-.160" (3.18–4.06 mm) aluminum using an alloy specific to the anodizing process. **Aluminum is one of the most sustainable materials in the world. It is infinitely recyclable and its re-use is easy and economical. In fact, nearly 75% of all aluminum ever produced since 1888 is still in use today.**

GageCarve is then anodized or powder coated with an interior or exterior grade finish for enhanced appearance, longevity and durability (refer to page 19 for finish definitions and AAMA specifications). Standard orientation for all designs is vertical; however, horizontal patterns can be specified. Product photos may not be to scale (request samples from the factory).

GageCarve currently offers 16 standard designs and 12 standard finishes. Design number and names are shown below the photos. Collaboration on custom designs and finishes is strongly encouraged subject to the parameters of the GageCarve process. Standard sheet size is 48" x 96" (1220 x 2440 mm) or 48" x 120" (1220 x 3050 mm).

GageCarve is available as sheet goods for direct application to the properly prepared substrate. GageCarve can also be specified in conjunction with Gage extrusion system components (System E) which architects and designers have successfully used with GageCast® and GageMetal® (fabrication by the installing contractor, refer to installation diagram in the GageCast technical section of our website, [www.gagecorp.net](http://www.gagecorp.net)).

GageCarve is appropriate for interior and exterior wall surfacing, feature walls, elevator doors (select patterns), elevator interiors, column covers, millwork accents and many other architectural applications.



Parc 55 Hotel Elevator Cab – San Francisco, CA  
C 1003 Ribbon (Nickel)  
Gensler – San Francisco, CA



## The Origin of GageCarve®

The Museum of Islamic art was designed by renowned architect I.M. Pei, and built on its own island in Doha Bay in the Arabian Gulf. The museum is the result of an Islamic architectural journey of discovery by Pei, at the age of 92. His final inspiration was from a 13<sup>th</sup> century mosque in Cairo, Egypt which offered an almost Cubist expression of geometric progression and evoked an abstract vision of the key design elements of Islamic architecture.

The galleries, encircling a five story domed atrium, showcase a collection of international masterpieces from Spain to India that spans more than 1,300 years. The romantic cultural icon for Doha, Qatar opened its doors in December of 2008 to guests passing through a long row of palm trees flanking reflecting pools.

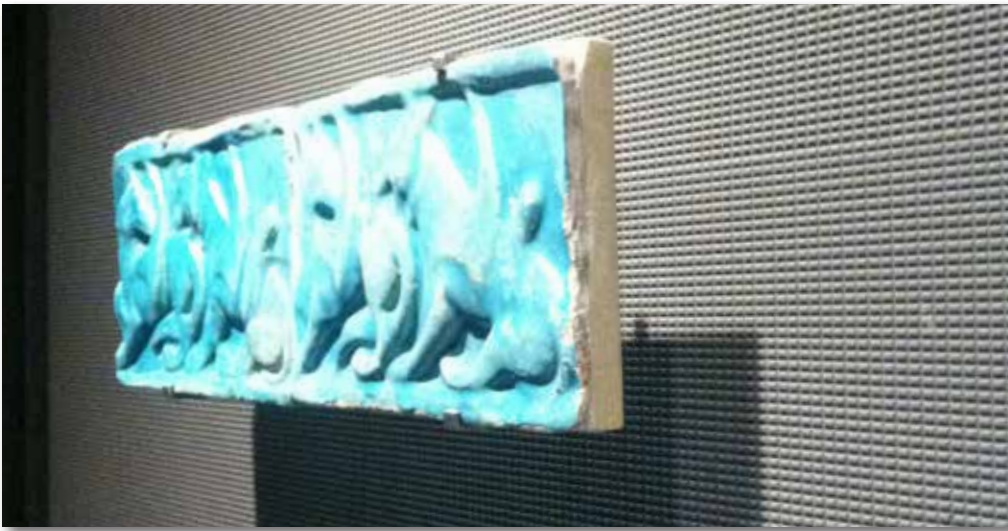
As a backdrop for the antiquities, Wilmotte Associates specified a carved metal panel that incorporated one of the design elements used in the facility. The difficulty was the specified material did not exist other than in the creative mind of the Architect.



Consequently, when the specification hit the street, a worldwide search was on for a manufacturer who could produce this material. When the Gage agent in the UAE became aware of the specification, he brought it to the attention of Gage Architectural Products.



Gage is known for creative problem solving and has accepted challenges for custom designs and new product development since its inception in 1988.



Although it took ingenuity, time, and persistence to meet the demanding requirements set forth by Wilmotte Associates, the Gage product submittal was ultimately selected for the Project.

Gage produced the material on time and on budget and is proud to grace the walls of this prestigious museum for visitors throughout time.



After the project was successfully completed, it was only logical that this concept would be the inception for a new product line. In 2007 GageCarve was launched. The inaugural design was named C 1000 Museum in honor of the original design created for the Museum of Islamic Art.

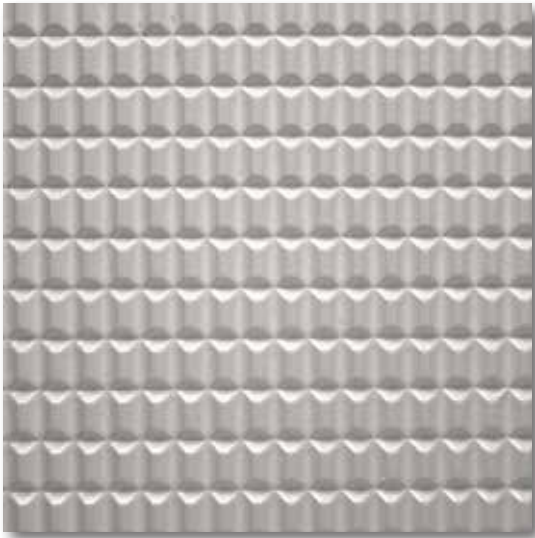
GageCarve has evolved into twelve standard designs and sixteen finishes. Custom designs are also available on request and subject to the parameters of our manufacturing process.

GageCarve has been specified by many of the world's foremost architectural and design firms in a wide variety of interior and exterior applications including embassies, banks, universities, restaurants, hotels, airlines, sports arenas, and cruise ships (refer to page 17).

In 2014, GageCarve was specified by the Hong Kong office of Gensler for the elevator interiors of the Shanghai Tower, the world's second tallest building (refer to page 16).

We encourage specifiers to contact us with questions or for samples.

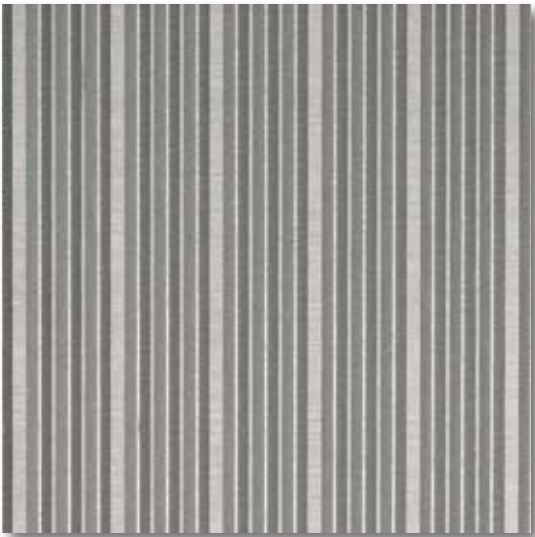




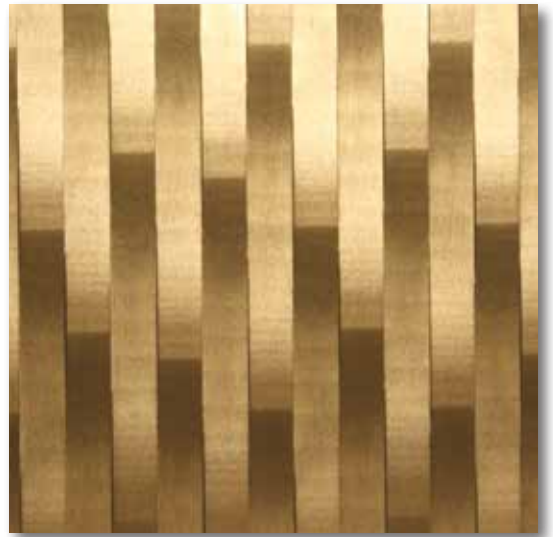
C 1000 Museum (Pearlized White)



C 1001 Miami (Nickel)



C 1002 Linear (Nickel)



C 1003 Ribbon (Brass)



C 1004 Organic (Champagne)



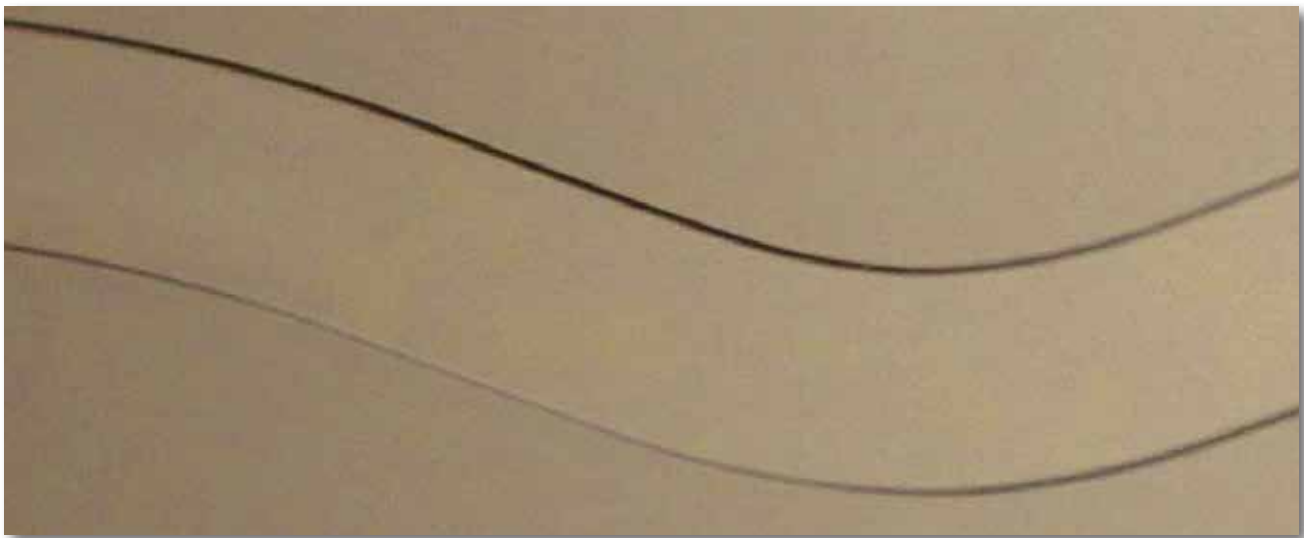
C 1005A Rough Cut (Bronze)



C 1006 Horizon (Nickel Metallic)



C 1008 Pyramid (Bronze Gold)



C 1009 Metro (Champagne)



C 1010 Plateau (Aged Bronze)



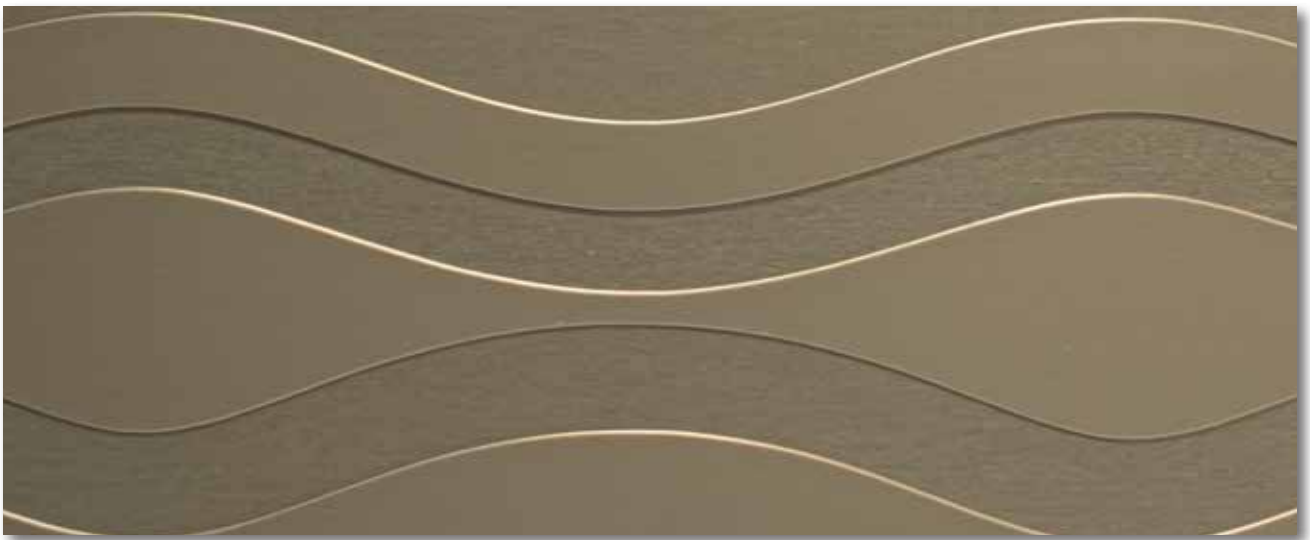
C 1011 Ripple (Bronze)



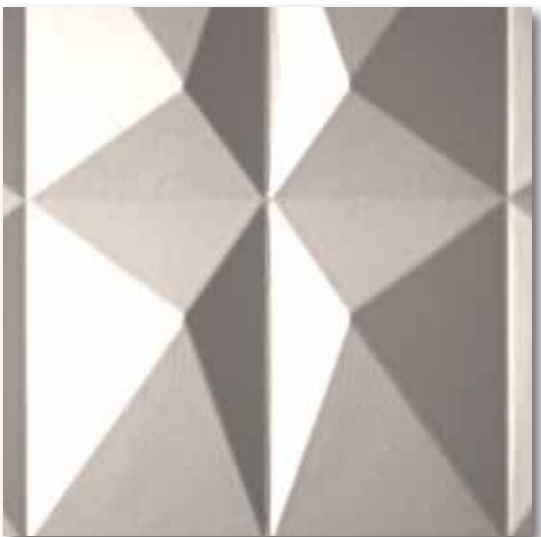
C 1012 Bamboo (Nickel)



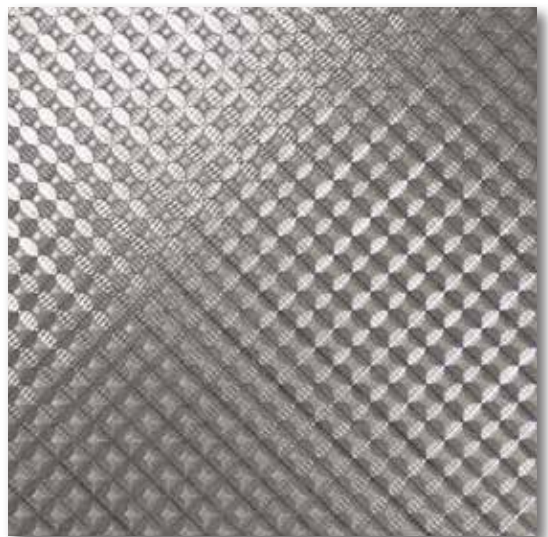
C 1013 Waves (Nickel)



C 1015 Reflections (Bronze)



C 1014 Origami\* (Pearlized White)



C 1016 D Diamond Cut (Clear Sailing)

\* C 1014 Origami also available in 300% scale (C 1017), see back cover





3000 Williams Island – Aventura, FL  
C 1004 Organic (Nickel)  
Fanny Haim & Associates – Miami FL



Harp Fisher Island Elevator Doors – Fisher Island, FL  
C 1004 Organic (Champagne)  
Levine, Calderin & Associates – Miami, FL



L.S.D. – Canton, OH  
C 1004 Organic (Nickel)  
Canton Architectural Products



Intercontinental Hotel - New York  
C 1005A Rough Cut (Aged Bronze)  
Jeffrey Beers Int'l. - New York



Intercontinental Hotel – New York  
C 1001 Miami (Bronze Gold)  
Jeffrey Beers Int'l. – New York



Intercontinental Hotel – New York  
C 1003 Ribbon (Bronze Gold)  
Gensler – New York



TD Bank Front



Cumberland Farms Elevator Lobby – Framingham, MA  
C 1001 Miami (Nickel)  
Spagnolo Gisness & Associates, Inc. – Boston, MA



TD Bank Front – Boston, MA  
C 1008 Pyramid (Nickel)  
Elkus Manfredi Architects – Boston, MA



535 Boylston St.



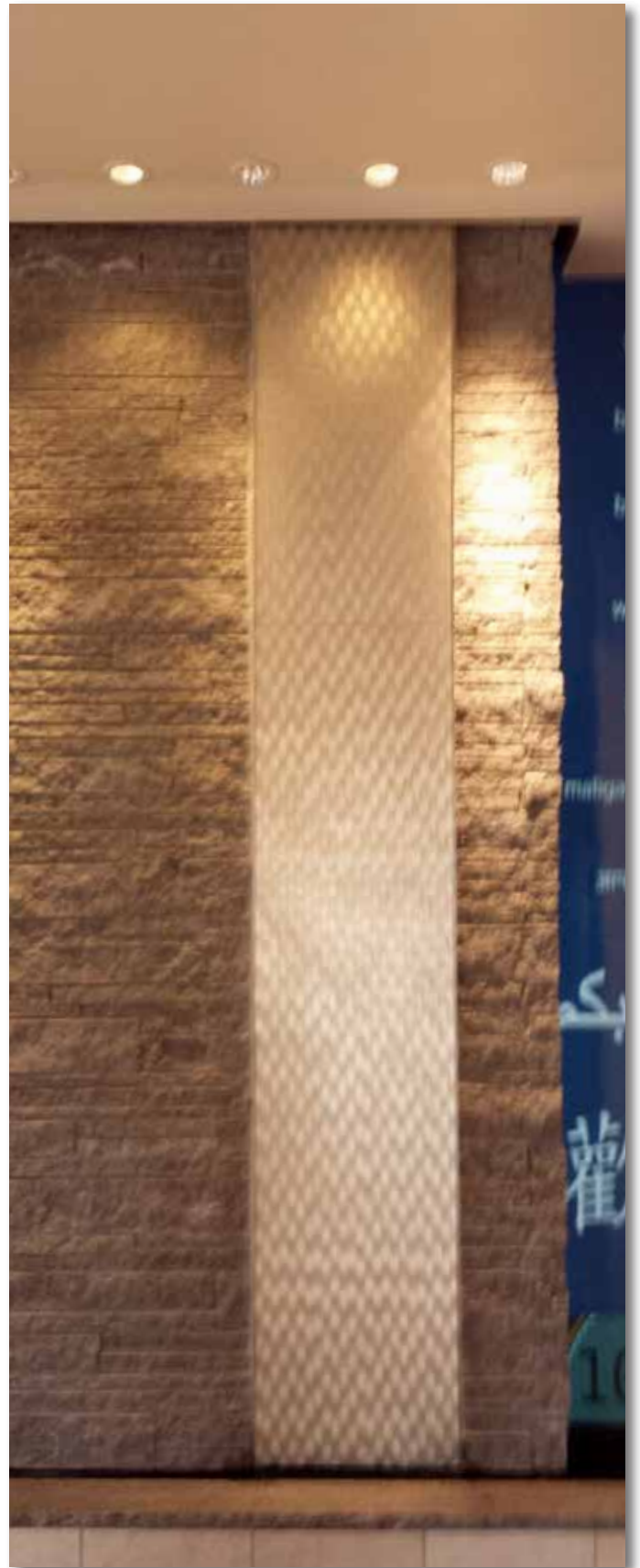
535 Boylston St. – Boston, MA  
C 1008 Pyramid (Nickel)  
Elkus Manfredi Architects – Boston, MA



Philadelphia Sheraton – Philadelphia, PA  
C 1000 Museum (Champagne)  
Interior Design Force – New York, NY



Paycor – Cincinnati Ohio  
C 1001 Miami (Nickel)  
Champlin Architecture – OH



DaVita Headquarters (Water Feature) – Denver, CO  
C 1011 Ripple (Champagne)  
Acquilano Leslie Inc. – Denver, CO



CBI The Woodlands – Houston, TX  
C 1011 Ripple (Nickel) horizontal orientation  
Ziegler Cooper – Houston, TX



Texas State University Performing Arts Theater  
C 1004 Organic (Aged Bronze) with Custom Cut Outs  
Morris Architects – Houston, TX



Shanghai Tower  
Gensler - Hong Kong  
(The world's second tallest building.)



C 1005A Rough Cut (Nickel)  
GageCarve was selected by Gensler Hong Kong  
for all the elevator cabs in this prestigious tower.

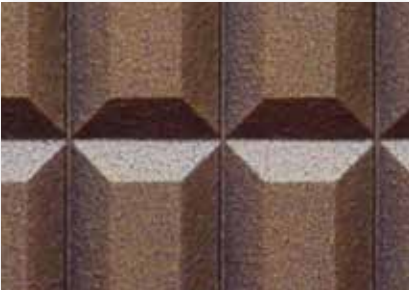




# Projects of Note

Name	Location	Specifying Architect
Bank of America, Epicenter	New York, NY	Gensler, San Francisco, CA
Boston University	Boston, MA	Brunner Cott Architects, Cambridge, MA
Carnival Cruise Line	Italy	Tino Sana, Italy
Casino Rama	Ontario, Canada	Mackay Wong Strategic Designs, Ontario, Canada
CB&I The Woodlands	The Woodlands, TX	Ziegler Cooper, Houston, TX
Elway's Restaurant	Denver, CO	Rowland & Broughton, Denver, CO
Estuary A	Weehaken, NJ	Cetra Ruddy Architecture, New York, NY
Hard Rock	Waikiki, HI	Cabridge Seven Architects, Cambridge, MA
Hard Rock	Albuquerque, NM	Walsh Bishop, Minneapolis MN
Hotel Georgia	Vancouver, Canada	Michell Freedland Design, Vancouver Canada
IBM	Edmonton, Canada	Wolski Design Group, Edmonton, Canada
Indiana Live	Shelbyville, IN	Cleo Design, Las Vegas NV
InterContinental Hotel	New York, NY	Gensler & Jeffrey Beers, New York, NY
Ironshore	Bermuda	Perkins Eastman, New York, NY
Lewis & Roca	Phoenix, AZ	Gensler, Phoenix, AZ
Magaly Marcos	Mexico	10+3 LLC, Dallas, TX
Marriott Marquis	Atlanta, GA	Design One Studio, Atlanta, GA
Museum of Islamic Art	Doha, Qatar	I.M. Pei, Wilmotte Associates, Paris, France
Northside Hospital	Atlanta, GA	K2J, Atlanta, GA
Norwegian Cruise Line	Italy	Tino Sana, Italy
Ohio State University	Columbus, OH	HOK Chicago, IL
Parc 55	San Francisco, CA	Gensler, San Francisco, CA
Philadelphia Eagles Stadium	Philadelphia, PA	Gensler, Los Angeles, CA
Plazzo Del Mare	Miami, FL	Levine Calderin & Associates, Miami, FL
Regus	10 locations	WB Interiors, Atlanta, GA/ID Group, Dallas, TX
Sabadell Financial Center	Miami, FL	AECOM, Coral Gables, FL
Singapore Chancery	New York, NY	HOK, New York, NY
Target Financial	Minneapolis, MN	Target, Minneapolis, MN
TD Bank	Boston MA	Elkus Manfredi Architects, Boston MA
United Airlines	SEA, BOS, LHR, SAN	Solomon Cordwell, Buentz, Chicago, IL
University of Tennessee	Knoxville, TN	BarberMcMurry Architects, Knoxville TN
UNO Roskens Hall	Omaha, NE	Holland Basham Architects, Omaha, NE
Woodruff Library Elevators	Atlanta, GA	Shepley Bulfinch, Boston MA

# Standard Finishes



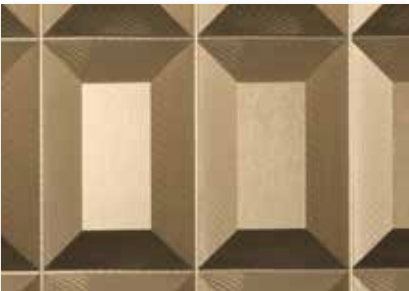
Aged Bronze



Brass



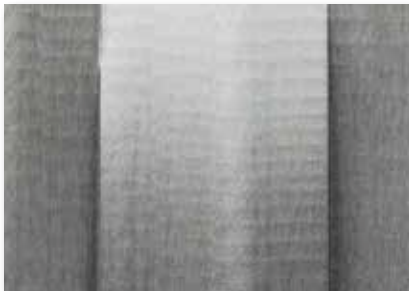
Bronze



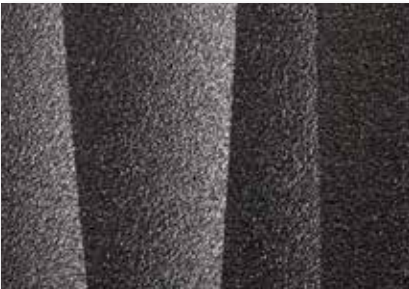
Bronze Gold



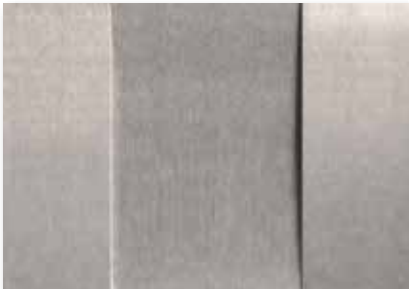
Champagne



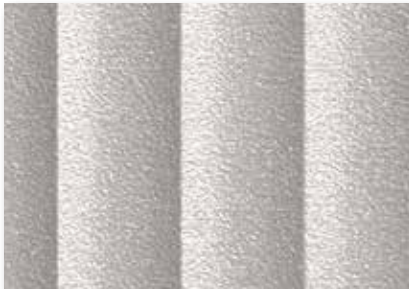
Clear Sailing



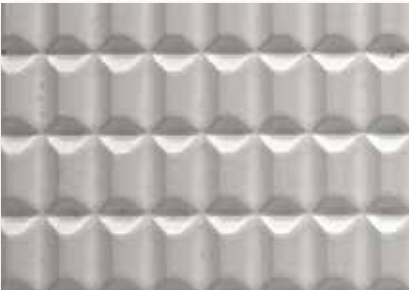
Metallic Black



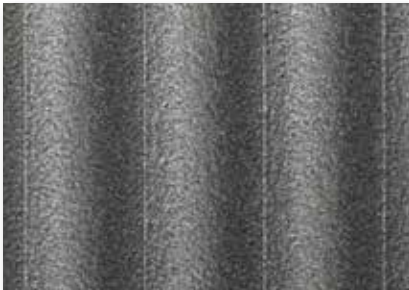
Nickel



Nickel Metallic



Pearlized White



Pewter



Sandstone

# Standard Finish Specifications

Standard Finishes	Code	Type	Gloss	Color Variance	Hardness ASTM D-3363	AAMA
Aged Bronze	AB	PC	Matte	+/-2 Delta E	0-2H	2603
Brass	BR	AN	Polished	+/- 5 Delta E	4-6H	611
Bronze	BZ	AN	Polished	+/- 5 Delta E	4-6H	611
Bronze Gold	BG	AN	Polished	+/- 5 Delta E	4-6H	611
Champagne	CH	AN	Polished	+/- 5 Delta E	4-6H	611
Clear Sailing	CS	PC	Gloss	+/-2 Delta E	2-4H	2604
Metallic Black	MB	PC	Matte	+/-2 Delta E	2-4H	2604
Nickel	NK	AN	Polished	+/- 5 Delta E	4-6H	611
Nickel Metallic	NM	PC	Satin	+/-2 Delta E	2-4H	2604
Pearlized White	WP	PC	Satin	+/-2 Delta E	2-4H	2604
Pewter	PW	PC	Matte	+/-2 Delta E	2-4H	2604
Sandstone	SS	PC	Satin	+/-2 Delta E	2-4H	2604

## Key

AN Anodized Finish

PC Powder Coat Finish

AAMA American Architectural Manufacturers Association (meets or exceeds specification listed above.)

Delta E Measurement of the distance in color space between two colors.

## Anodizing

Also known as electrolytic passivation, anodizing is the process used to increase the thickness of the natural oxide layer of the aluminum surface. Anodizing increases corrosion resistance, wear resistance and surface hardness. In addition, it allows for selective dyeing or coloring, although minor color variation is inherent in the process. We offer a standard selection of anodized finishes. Custom anodized finishes are rarely produced due to the nature of the process. Anodizing is environmentally safe emitting zero volatile organic compounds (VOC).

## Powder Coating

Powder Coating is an electrostatic application of a dry powder that is then cured by heat to form a durable cover skin over the aluminum substrate. Powder coat finishes are more durable than liquid paints with very little color variance. Custom powder coat finishes are offered by Gage in addition to our standard powder coat finishes. Powder coating is also kind to the environment and emits zero VOCs.

Specifying GageCarve® is a simple process. Follow the guidelines listed below. Complete specifications, technical, and installation information can be found at [www.gagecorp.net](http://www.gagecorp.net).

Item:	Gage Vertical Surfacing (GVS) – GageCarve
Design:	Enter specified design, i.e. C 1001 Miami
Finish:	Specify required metal finish and associated AAMA specification, i.e. Nickel/AAMA 611
Size:	Standard 48" x 96" (1220 x 2440 mm), 48" x 120" (1220 x 3050 mm)
Thickness:	.125"-.160" (3.18-4.06 mm)
Weight:	1.5-2.0 lbs/SF (7.32 – 9.76 kg/sm)
System:	Adhesive, System E, or by installer
Fire Rating:	ASTM E-84: Class A
Note:	Contact Gage directly (800-786-4243) for more detailed specification information.

### General Comments

---

1. Standard lead times are typically 6-8 weeks. Contact customer service for expedited production schedules.
2. Quotations for standard products are provided within 24-48 hours of request.
3. GageCarve currently has 16 standard designs and 12 standard finishes. Custom finishes are a specialty of Gage Architectural Products.
4. Custom designs and finishes are encouraged subject to quantity minimums, plus applicable set up and development costs. Allow 2-4 weeks for custom sample development.

Please contact Gage for custom designs or specialty finishes.

### Gage Environmental Statement

Leading the way in environmental management, The Gage Corporation International through its affiliate company, Northern Engraving Corporation, was one of the first 10 facilities to earn ISO 14001 Environmental Registration in Wisconsin, Minnesota and Iowa.

One of only six companies to receive the Governor's Award for Excellence in Hazardous Waste Reduction in 2000, Gage and its affiliate company continually strive to reduce the impact its business has on the environment. Whether it's using pre-consumer recycled materials in its aluminum products, or pursuing "Superior Environmental Performance" through the signing of a cooperative agreement with the Wisconsin Department of Natural Resources, Gage is committed to a greener planet.

*Background C 1017 Origami II*

### **The GAGE Corporation, Int.**

777 S. Black River St.  
Sparta, WI 54656 USA

TF: 800-786-4243 · PH: 608.269.7447 · FX: 608-269-7622

[www.gagecorp.net](http://www.gagecorp.net) [info@gagecorp.net](mailto:info@gagecorp.net)

