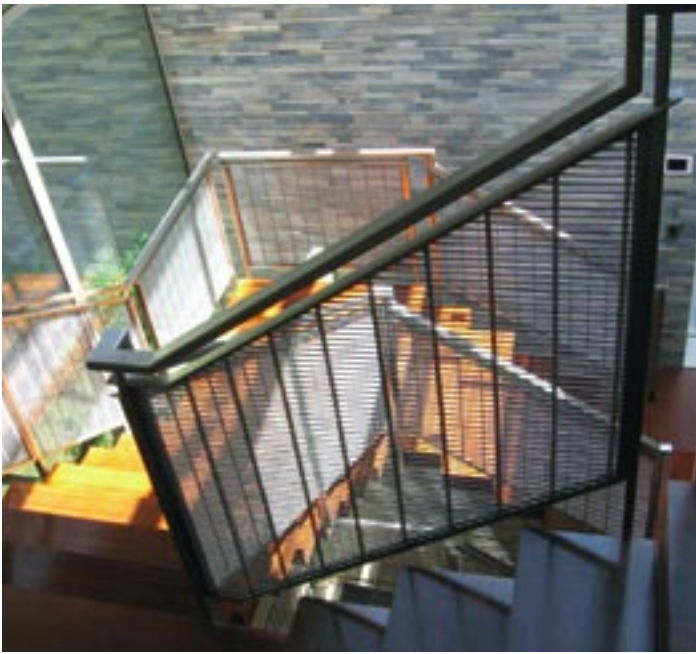


System (USS)

Universal Spine System (USS) – Precision metal cutting and welding techniques are used to create a unique woven mesh framing system suitable for in-fill panels, wall panels (flush mount or with stand offs) and room dividers. This framing technology provides for select mesh patterns to be incorporated into multiple mounting strategies. Not all of our 23 standard mesh patterns are suitable for in-fill panels. Specific applications should be discussed with the factory. This mounting system provides tremendous strength for specific uses or other aesthetically pleasing design applications.

Standard dimensions for the universal spine outer covers are 1" minimum width x 1/2" nominal thickness. Maximum overall dimensions are 48" x 60" (in-fill panels) and 48" x 96" (dividers/wall panels – dependent on pattern).



Above: Private Residence • GW 911 Venetian (SS) USS System
Specifier: Marmol Radziner + Associates
Photography by Alicia Daugherty

